

SYMBOLS LEGEND

FURNISHING TAG

REFER TO
FURNISHING
PROPOSAL FOR
CORRESPONDING
FURNISHING ITEM

01

FLOOR FINISH TAG

WALL BASE MATERIAL

FLOOR MATERIAL

CT 3

CT 1

FINISH #

MILLWORK FINISH TAG

COUNTER MATERIAL

CABINET MATERIAL

SS 3

CAB 1

FINISH #

WALL FINISH TAG

NORTH MATERIAL

EAST MATERIAL

SOUTH MATERIAL

WEST MATERIAL

PT 3

PT 3

PT 2

WC 1

FINISH #

ADJACENT FLOOR FINISH TAG

INDICATES LOCATION WHERE
FINISHES MEET WITH
TRANSITION

FLOOR FINISH DIRECTION

INDICATES DIRECTION OF
FLOOR MATERIAL PATTERN

FINISH LEGEND	
<div>FLOOR MATERIAL</div> <div><div>C6</div><div>CT</div><div>CPT</div><div>VCT</div><div>VP</div><div>WD</div></div> <div>TROUCEL-FINISH CONCRETE SEALED CERAMIC TILE CARPET VINYL COMPOSITE TILE VINYL PLANK WOOD</div>	
<div>WALL BASE MATERIAL</div> <div><div>-</div><div>CT</div><div>VB</div><div>VPB</div><div>WB</div></div> <div>INDICATES NO BASE IS REQUIRED CERAMIC TILE VINYL BASE VINYL "PROFILE" BASE WOOD BASE</div>	
<div>WALL MATERIAL</div> <div><div>-</div><div>CT</div><div>FRP</div><div>MR</div><div>PT</div><div>PW</div><div>WC</div></div> <div>INDICATES NO WALL ON THIS SIDE OF ROOM CERAMIC WALL TILE FIBER REINFORCED PANEL MIRROR PAINT WASHABLE PAINT WALL COVERING</div>	
<div>MISCELLANEOUS MATERIALS</div> <div><div>BL</div><div>CHR</div><div>PL</div></div> <div>BUNDS CHAIR RAIL PLASTIC LAMINATE</div>	

GENERAL FINISH NOTES

- ALL WORK TO BE PERFORMED IN A PROFESSIONAL MANNER, AND INSTALLED ACCORDING TO ALL MANUFACTURERS INSTRUCTIONS AND RECOMMENDATIONS.
- ALL MATERIALS ARE TO BE NEW AND CLEAN, AND INSTALLED ACCORDING TO ALL MANUFACTURERS INSTRUCTIONS AND RECOMMENDATIONS, UNLESS OTHERWISE SPECIFIED.
- CONTRACTOR SHALL FIELD CHECK AND VERIFY ALL DIMENSIONS AND CONDITIONS AT THE SITE WHICH WILL IMPACT OR INTERFERE WITH HIS WORK AND BE RESPONSIBLE FOR SAME. ANY DISCREPANCIES BETWEEN ACTUAL CONDITIONS AND CONTRACT DOCUMENTS ARE TO BE BROUGHT TO THE ATTENTION OF THE OWNER, THE INTERIOR DESIGNER, AND ARCHITECT, PRIOR TO COMMENCEMENT OF WORK.
- ANY DEVIATIONS FROM SPECIFICATIONS OR DRAWINGS SHALL BE SUBMITTED IN WRITING WITH ACCOMPANYING SAMPLES, DRAWINGS, AND/OR CUT SHEETS TO THE INTERIOR DESIGNER FOR APPROVAL, PRIOR TO COMMENCEMENT OF SAID DEVIATION(S). ALL SUBSTITUTIONS MUST BE SUBMITTED FOR APPROVAL.
- IF ANY ERRORS, OMISSIONS OR CONTRADICTIONS ARE FOUND OCCURRING IN THE DOCUMENTS OR IN EXISTING FIELD CONDITIONS, THE CONTRACTOR SHALL NOTIFY THE INTERIOR DESIGNER OF SUCH ERROR, OMISSION, OR CONTRADICTION. GIVING OF SAID NOTICE DOES NOT RELIEVE THE CONTRACTOR OF HIS/HER RESPONSIBILITY TO CHECK, VERIFY, AND COORDINATE DIMENSIONS OR ANY OTHER PORTION OF CONSTRUCTION OF THIS PROJECT OR FOR THE RESULTS THEREOF AND THE COST OF RECTIFYING THE SAME.
- PROVIDE FLOORING INSTALLATION LEVEL, SMOOTH, AND ALIGNED WITH BUILDING LINES. PROVIDE FLOOR PREPARATION REQUIRED TO ACHIEVE SPECIFIED LEVELNESS AND SMOOTHNESS. ONCE CONTRACTOR STARTS PERFORMING HIS WORK, HE TAKES RESPONSIBILITY FOR ANY UNDERLAYMENT OR EXISTING SURFACE BELOW.
- ADJACENT DIFFERING FLOOR MATERIALS ARE TO BE LEVEL WITH EACH OTHER AND INSTALLED WITHOUT RAISED TRANSITION. INSTALLATION/ TRANSITION OF ADJACENT FLOORING MATERIALS MUST BE APPROVED BY ARCHITECT ON PROJECT SITE.
- INTERIOR DRYWALL TO RECEIVE PRIMER PLUS TWO COATS INTERIOR LATEX FINISHED WALL SHOULD HAVE AN ORANGE PEEL FINISH, FINISHED CEILING TO HAVE KNOCKDOWN FINISH. PROVIDE THE SCHEDULED PAINT, OR OTHER SCHEDULED FINISHES TO COMPLETELY FINISH THE INDICATED SURFACE.
- SEE ARCHITECTURAL DUGS FOR CABINET ELEVATIONS. REFER TO MANUFACTURER SHOP DRAWINGS FOR ALL ACTUAL INSTALLED DIMENSIONS.
- WARRANTY AND MAINTENANCE INFORMATION SHALL BE PROVIDED BY CONTRACTOR TO OWNER FOR ALL INSTALLED FINISHES AT COMPLETION OF CONSTRUCTION.
- VINYL WALLCOVERING SHALL NOT BE INSTALLED UPON EXTERIOR MASONRY WALLS.
- CONTRACTORS MUST BE AWARE OF LEAD TIMES FOR SPECIFIED PRODUCTS, AND ORDER MATERIALS ACCORDINGLY.
- CONTRACTOR TO INSTALL TILE FLOORS WITH MINIMUM GROUT WIDTH RECOMMENDED BY THE MANUFACTURER.
- CONTRACTOR TO PROVIDE AND INSTALL INTERIOR SIGNAGE AS SPECIFIED IN THE FINISH SPECIFICATION SCHEDULE & REQUIRED BY ALL FEDERAL, STATE, & LOCAL CODES AND BUILDING OFFICIALS. G.C. IS TO SUBMIT SHOP DRAWINGS FOR ALL INTERIOR SIGN TYPES, BUILDING SIGN LOCATION PLAN, AND SIGN VERBIAGE SCHEDULE. GC IS TO SUBMIT SHOP DRAWINGS FOR ALL INTERIOR SIGN TYPES, BUILDING SIGN LOCATION PLAN, AND SIGN VERBIAGE SCHEDULE.
- CONTRACTOR TO PROVIDE AND INSTALL BLINDS/ DRAPERY AT ALL WINDOWS AS SPECIFIED UNLESS STATED OTHERWISE.
- CARPET SHALL BE INSTALLED IN CORRIDORS THE DIRECTION OF TRAFFIC UNLESS OTHERWISE NOTED.
- SHEET VINYL MUST BE INSTALLED WITH THE MIN. AMOUNT OF SEAMS.
- UNLESS NOTED OTHERWISE ON REFLECTED CEILING PLANS, PAINT GYP. BOARD CEILINGS, 1" x 13 3/4" x 9' CEILING BRIGHT WHITE.
- PAINT EXPOSED PRIMED STEEL STAIR COMPONENTS BUT935 TONY TAUPES REFER TO SPEC MANUAL FOR PAINT TYPE.

TYPICAL FLOOR TRANSITION DETAILS

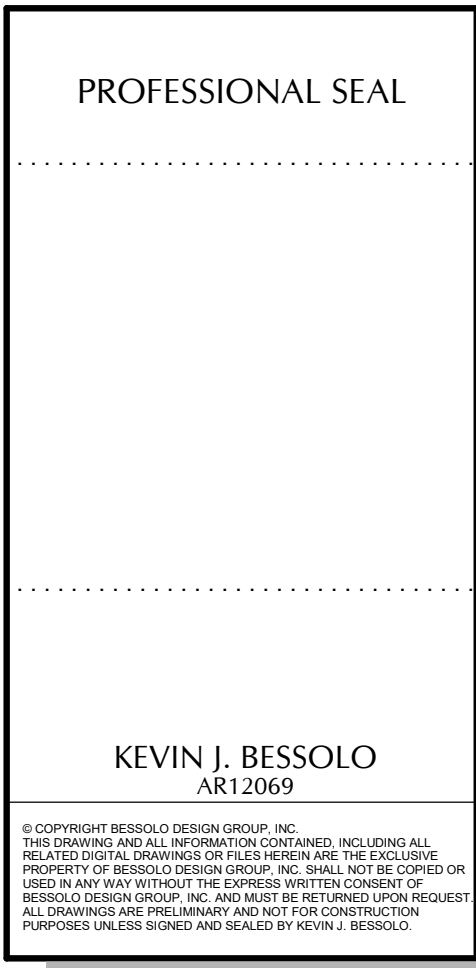
BATHROOM THRESHOLD

CARPET-CERAMIC TILE

VCT-SEALED CONCRETE

CARPET-VINYL PLANK

VINYL PLANK-CERAMIC TILE



ISSUED	
DATE:	ISSUED FOR:
12-29-17	BUILDING PERMIT

PROJECT NO:	15083.00
DRAWN BY:	9UG
PROJECT MANAGER:	AW
CHECKED BY:	KJB
DATE:	12-29-17
SCALE:	NOT TO SCALE

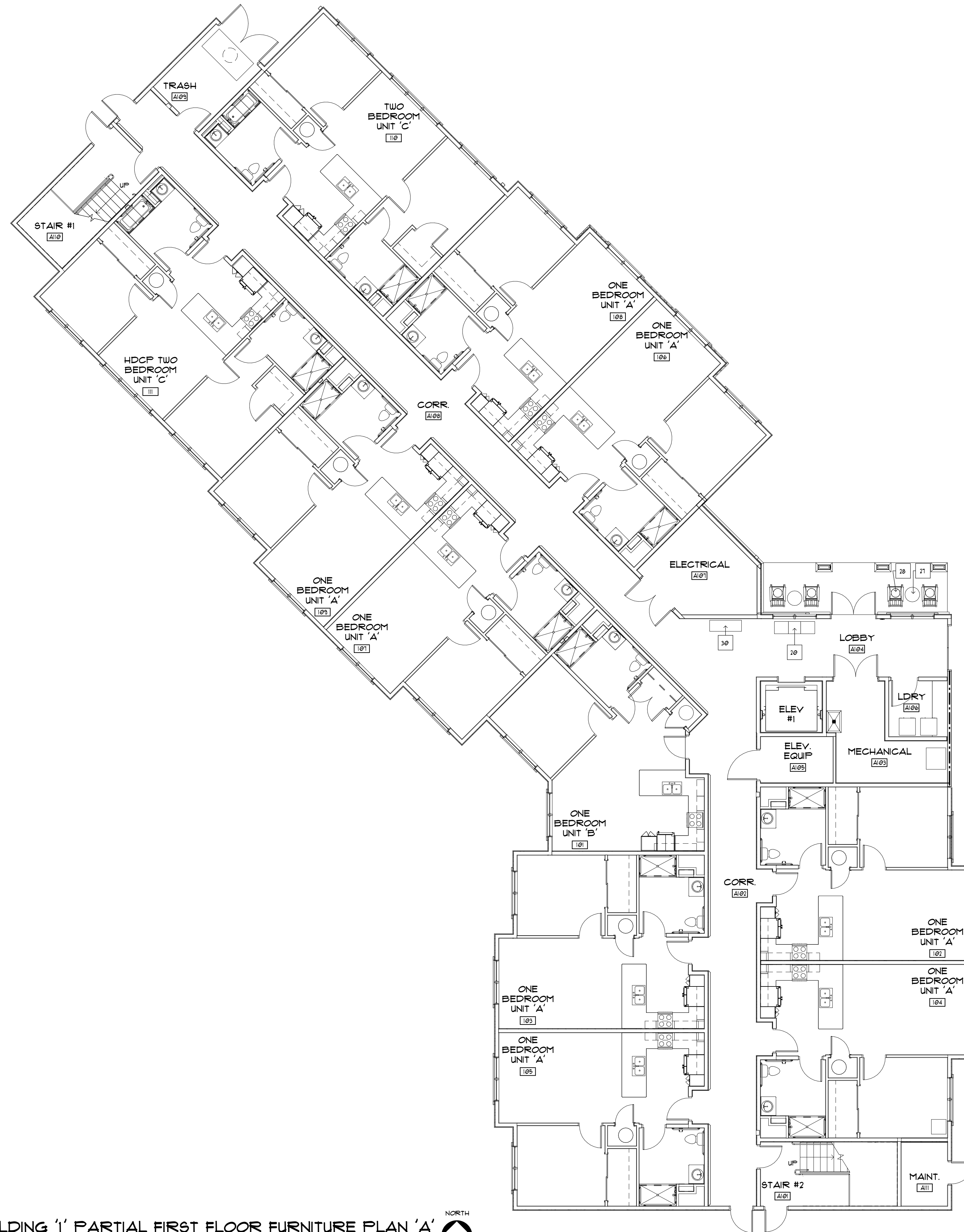
1001

BUILDING '1'

INTERIOR DESIGN

GENERAL INFORMATION

SCALE: $1/8" = 1'-0"$



1	OMIT	16	OMIT	31	OMIT
2	OMIT	17	OMIT	32	OMIT
3	OMIT	18	OMIT	33	OMIT
4	OMIT	19	OMIT		
5	OMIT	20	BENCH		
6	OMIT	21	OMIT		
7	OMIT	22	OMIT		
8	OMIT	23	OMIT		
9	OMIT	24	OMIT		
10	OMIT	25	OMIT		
11	OMIT	26	OMIT		
12	OMIT	27	OUTDOOR TABLE		
13	OMIT	28	OUTDOOR ROCKER		
14	OMIT	29	NOT USED		
15	OMIT	30	CONSOLE TABLE		



© COPYRIGHT BESOLO DESIGN GROUP, INC.
THIS DRAWING AND ALL INFORMATION CONTAINED, INCLUDING ALL
RELATED DIGITAL DRAWINGS OR FILES HEREIN ARE THE EXCLUSIVE
PROPERTY OF BESOLO DESIGN GROUP, INC. SHALL NOT BE COPIED OR
USED IN ANY WAY WITHOUT THE EXPRESS WRITTEN CONSENT OF
BESOLO DESIGN GROUP, INC. AND MUST BE RETURNED UPON REQUEST.
ALL DRAWINGS ARE PRELIMINARY AND NOT FOR CONSTRUCTION
PURPOSES UNLESS SIGNED AND SEALED BY KEVIN J. BESOLO.

**MHA - PALMS AT UNIVERSITY
APARTMENTS
PHASE II - BUILDING I**

**585 E. UNIVERSITY BOULEVARD
MELBOURNE, FLORIDA 32901**

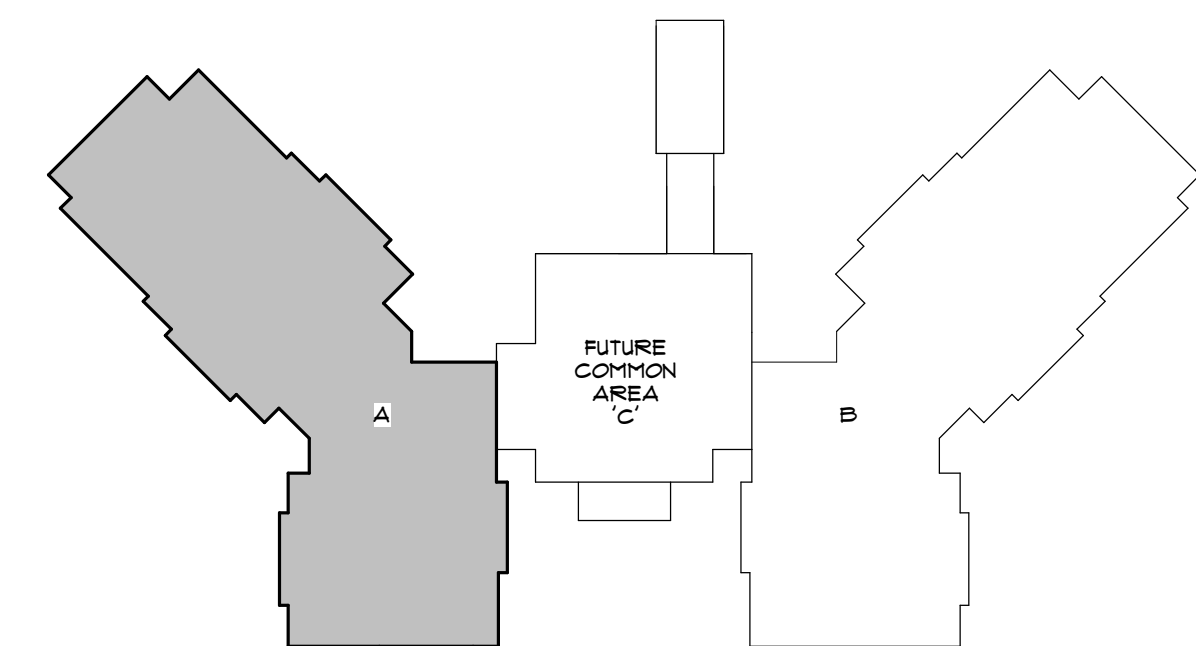
DATE:	ISSUED FOR:
12-29-17	BUILDING PERMIT

[illegible]

PROJECT NO:	15083.00
DRAWN BY:	SUG
PROJECT MANAGER:	AW
CHECKED BY:	KJB
DATE:	12-29-11
SCALE:	1/8" = 1'-0"

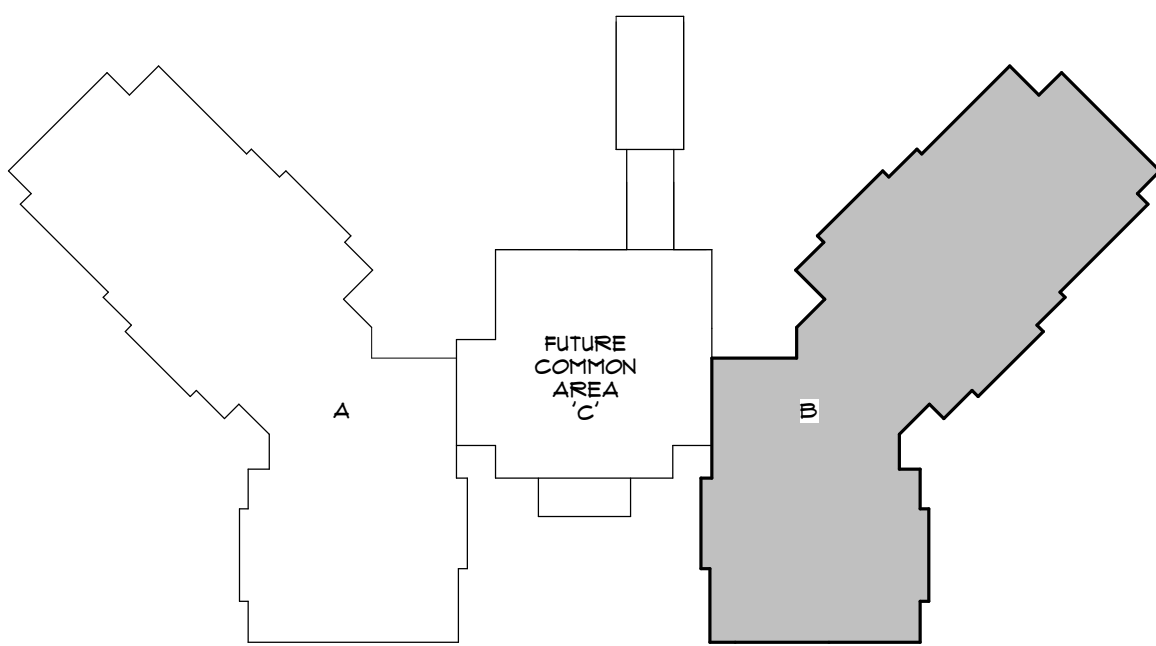
D101A

BUILDING '1'
PARTIAL FIRST FLOOR
FURNITURE PLAN 'A'



KEY PLAN

1	OMIT	16	OMIT	31	OMIT
2	OMIT	17	OMIT	32	OMIT
3	OMIT	18	OMIT	33	OMIT
4	OMIT	19	OMIT		
5	OMIT	20	BENCH		
6	OMIT	21	OMIT		
7	OMIT	22	OMIT		
8	OMIT	23	OMIT		
9	OMIT	24	OMIT		
10	OMIT	25	OMIT		
11	OMIT	26	OMIT		
12	OMIT	27	OUTDOOR TABLE		
13	OMIT	28	OUTDOOR ROCKER		
14	OMIT	29	NOT USED		
15	OMIT	30	CONSOLE TABLE		



KEY PLAN



PROFESSIONAL SEAL

KEVIN J. BESSOLO
AR12069

© COPYRIGHT BESSOLO DESIGN GROUP, INC.
THIS DRAWING AND ALL INFORMATION CONTAINED, INCLUDING ALL
RELATED DIGITAL DRAWINGS OR FILES HEREIN ARE THE EXCLUSIVE
PROPERTY OF BESSOLO DESIGN GROUP, INC. SHALL NOT BE COPIED OR
USED IN ANY WAY WITHOUT THE EXPRESS WRITTEN CONSENT OF
BESSOLO DESIGN GROUP, INC. AND MUST BE RETURNED UPON REQUEST.
ALL DRAWINGS ARE PRELIMINARY AND NOT FOR CONSTRUCTION
PURPOSES UNLESS SIGNED AND SEALED BY KEVIN J. BESSOLO.

MHA - PALMS AT UNIVERSITY
APARTMENTS
PHASE II - BUILDING I
555 E. UNIVERSITY BOULEVARD
MELBOURNE, FLORIDA 32901

ISSUED

DATE:	ISSUED FOR:
12-29-17	BUILDING PERMIT

REVISIONS

[illegible]

PROJECT NO:	15083.00
DRAWN BY:	SUG
PROJECT MANAGER:	AW
CHECKED BY:	KJB
DATE:	12-29-17
SCALE:	1/8" = 1'-0"

ID|0|B

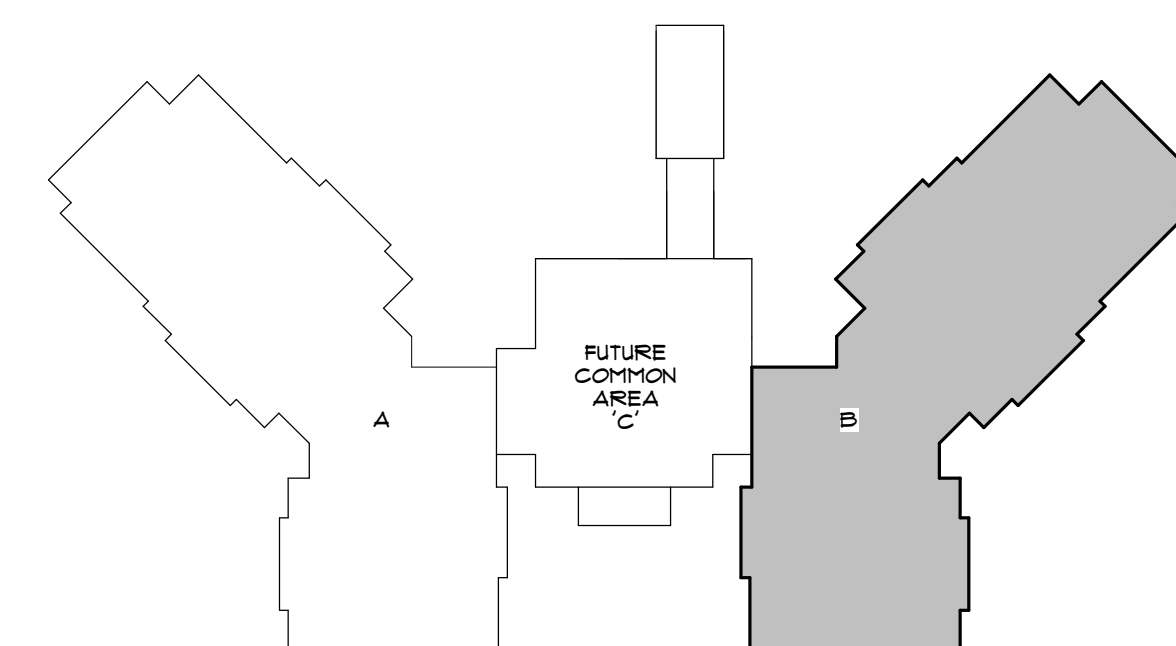
BUILDING '1'
PARTIAL FIRST FLOOR
FURNITURE PLAN 'B'

NORTH

A circular north arrow with a stylized arrow pointing upwards, indicating the orientation of the map.

FURNISHING KEY

1	CHST	16	CHST	31	CHST
2	CHST	17	CHST	32	CHST
3	CHST	18	CHST	33	CHST
4	CHST	19	CHST		
5	CHST	20	BENCH		
6	CHST	21	CHST		
7	CHST	22	CHST		
8	CHST	23	CHST		
9	CHST	24	CHST		
10	CHST	25	CHST		
11	CHST	26	CHST		
12	CHST	27	OUTDOOR TABLE		
13	CHST	28	OUTDOOR ROCKER		
14	CHST	29	NOT USED		
15	CHST	30	CONSOLE TABLE		



KEY PLAN



PROFESSIONAL SEAL

KEVIN J. BESSOLO
AR12069

© COPYRIGHT BESSOLO DESIGN GROUP, INC.
THIS DRAWING AND ALL INFORMATION CONTAINED, INCLUDING ALL
RELATED DIGITAL DRAWINGS OR FILES HEREIN ARE THE EXCLUSIVE
PROPERTY OF BESSOLO DESIGN GROUP, INC. SHALL NOT BE COPIED OR
USED IN ANY WAY WITHOUT THE EXPRESS WRITTEN CONSENT OF
BESSOLO DESIGN GROUP, INC. AND MUST BE RETURNED UPON REQUEST.
ALL DRAWINGS ARE PRELIMINARY AND NOT FOR CONSTRUCTION
PURPOSES UNLESS SIGNED AND SEALED BY KEVIN J. BESSOLO.

**MHA - PALMS AT UNIVERSITY
APARTMENTS
PHASE 11 - BUILDING 1**

**585 E. UNIVERSITY BOULEVARD
MELBOURNE, FLORIDA 32901**

ISSUED

DATE:	ISSUED FOR:
12-29-17	BUILDING PERMIT

REVISIONS

[illegible]

PROJECT NO:	15083.00
DRAWN BY:	SUG
PROJECT MANAGER:	AW
CHECKED BY:	KJB
DATE:	12-29-17
SCALE:	1/8" = 1'-0"

1D102B

BUILDING '1'
PARTIAL SECOND
FLOOR FURNITURE
PLAN 'B'



FURNISHING KEY

1	OMIT	16	OMIT	31	OMIT
2	OMIT	17	OMIT	32	OMIT
3	OMIT	18	OMIT	33	OMIT
4	OMIT	19	OMIT		
5	OMIT	20	BENCH		
6	OMIT	21	OMIT		
7	OMIT	22	OMIT		
8	OMIT	23	OMIT		
9	OMIT	24	OMIT		
10	OMIT	25	OMIT		
11	OMIT	26	OMIT		
12	OMIT	27	OUTDOOR TABLE		
13	OMIT	28	OUTDOOR ROCKER		
14	OMIT	29	NOT USED		
15	OMIT	30	CONSOLE TABLE		



© COPYRIGHT BESSOLO DESIGN GROUP, INC.
THIS DRAWING AND ALL INFORMATION CONTAINED, INCLUDING ALL
RELATED DIGITAL DRAWINGS OR FILES HEREIN ARE THE EXCLUSIVE
PROPERTY OF BESSOLO DESIGN GROUP, INC. SHALL NOT BE COPIED OR
USED IN ANY WAY WITHOUT THE EXPRESS WRITTEN CONSENT OF
BESSOLO DESIGN GROUP, INC. AND MUST BE RETURNED UPON REQUEST.
ALL DRAWINGS ARE PRELIMINARY AND NOT FOR CONSTRUCTION
PURPOSES UNLESS SIGNED AND SEALED BY KEVIN J. BESSOLO.

ISSUED	
DATE:	ISSUED FOR:
12-29-17	BUILDING PERMIT

PROJECT NO:	15083.00
DRAWN BY:	SUG
PROJECT MANAGER:	AW
CHECKED BY:	KJB
DATE:	12-29-17
SCALE:	1/8" = 1'-0"

ID103A

BUILDING 'I'
PARTIAL THIRD FLOOR
FURNITURE PLAN 'A'

KEY PLAN

[illegible]

PROFESSIONAL SEAL

KEVIN J. BESSOLO
AR12069

© COPYRIGHT BESSOLO DESIGN GROUP, INC.
THIS DRAWING AND ALL INFORMATION CONTAINED, INCLUDING ALL
RELATED DIGITAL DRAWINGS OR FILES HEREIN ARE THE EXCLUSIVE
PROPERTY OF BESSOLO DESIGN GROUP, INC. SHALL NOT BE COPIED OR
USED IN ANY WAY WITHOUT THE EXPRESS WRITTEN CONSENT OF
BESSOLO DESIGN GROUP, INC. AND MUST BE RETURNED UPON REQUEST.
ALL DRAWINGS ARE PRELIMINARY AND NOT FOR CONSTRUCTION
PURPOSES. UNLESS SIGNED AND SEALED BY AN INDIVIDUAL BESSOLO.

MHA - PALMS AT UNIVERSITY
APARTMENTS
PHASE II - BUILDING I

ISSUED

DATE:	ISSUED FOR:
12-29-17	BUILDING PERMIT

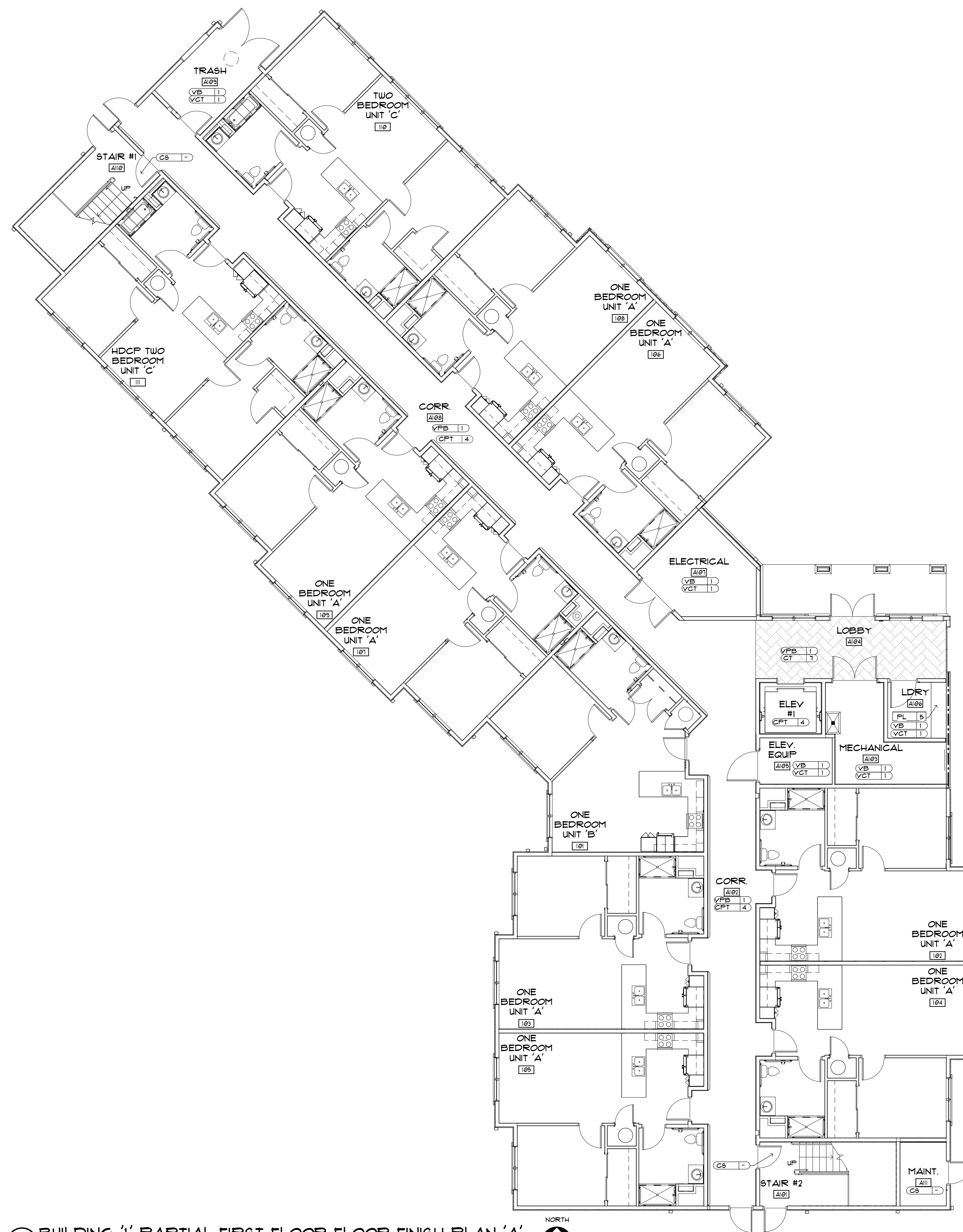
REVISIONS

[illegible]

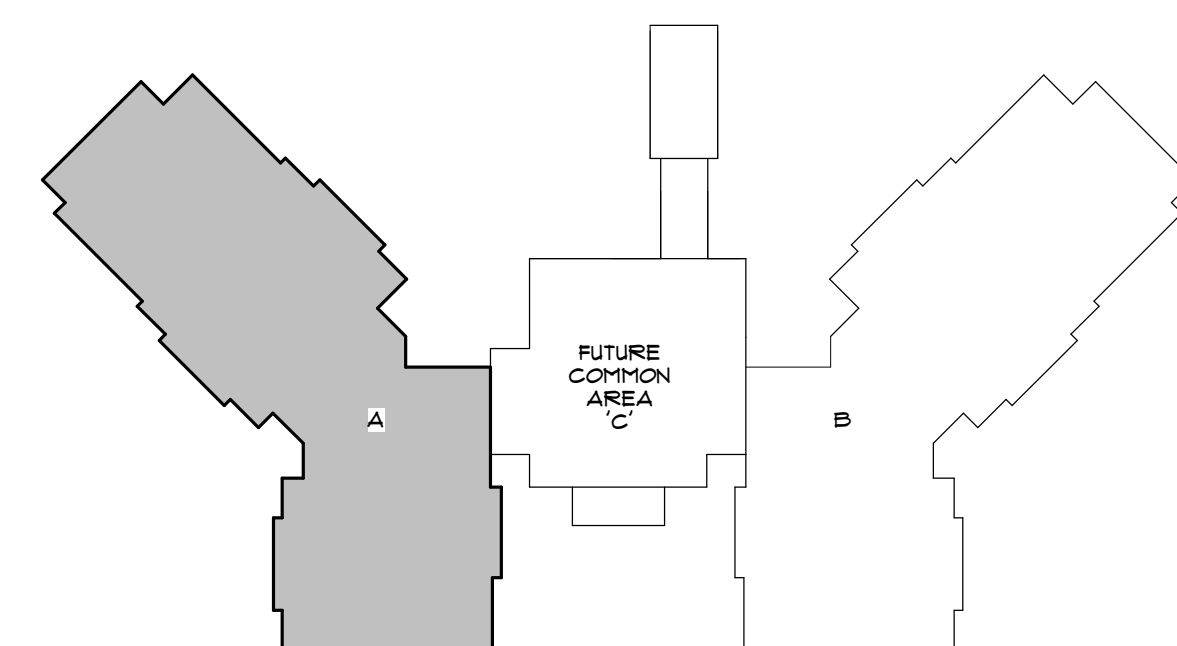
PROJECT NO:	15003.00
DRAWN BY:	SUG
PROJECT MANAGER:	AW
CHECKED BY:	KJB
DATE:	12-29-17
SCALE:	1/8" = 1'-0"

ID201A

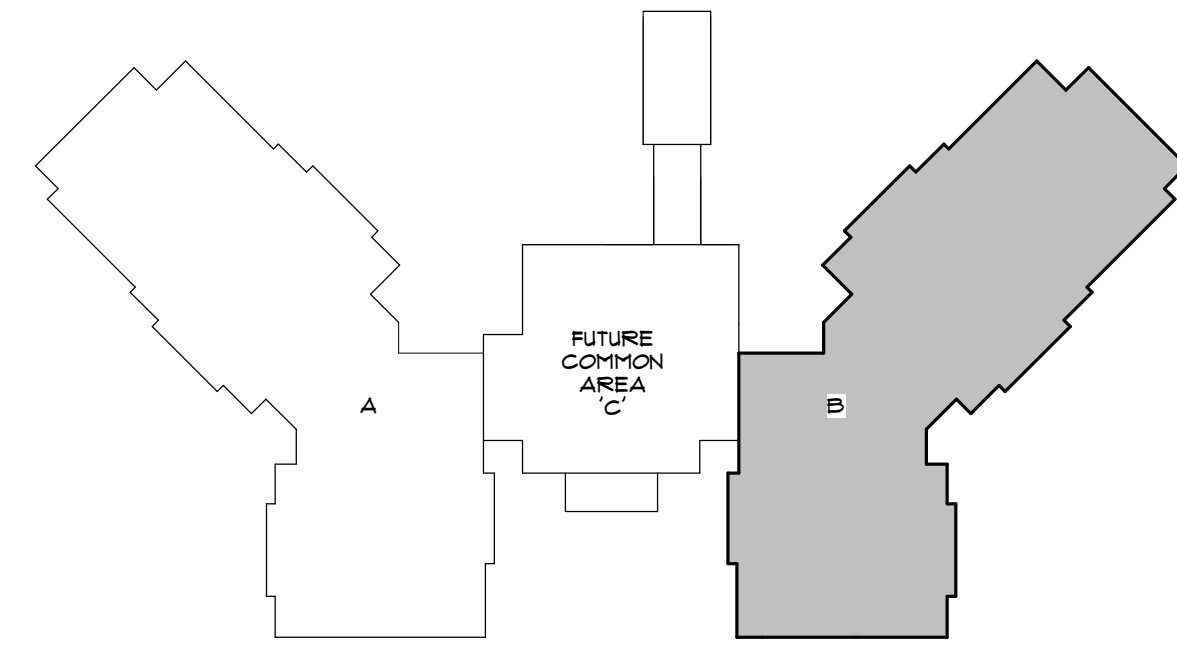
BUILDING '1'
PARTIAL FIRST FLOOR
FLOOR FINISH PLAN 'A'



KEY PLAN



NORTH



KEY PLAN



© COPYRIGHT BISSOLO DESIGN GROUP, INC.
THIS DRAWING AND ALL INFORMATION CONTAINED, INCLUDING ALL
RELATED DIGITAL DRAWINGS OR FILES HEREIN ARE THE EXCLUSIVE
PROPERTY OF BISSOLO DESIGN GROUP, INC. SHALL NOT BE COPIED OR
USED IN ANY WAY WITHOUT THE EXPRESS WRITTEN CONSENT OF
BISSOLO DESIGN GROUP, INC. AND MUST BE RETURNED UPON REQUEST.
ALL DRAWINGS ARE PRELIMINARY AND NOT FOR CONSTRUCTION
PURPOSES UNLESS SIGNED AND SEALED BY KEVIN J. BISSOLO.

**MHA - PALMS AT UNIVERSITY
APARTMENTS
PHASE I I - BUILDING I**

ISSUED	
DATE:	ISSUED FOR:
12-29-17	BUILDING PERMIT

[illegible]

PROJECT NO: 15083.00
DRAIN BY: SUG
PROJECT MANAGER: AIW
CHECKED BY: KJB
DATE: 12-29-17
SCALE: 1/8" = 1'-0"

ID201B
 BUILDING '1'
 PARTIAL FIRST FLOOR
 FLOOR FINISH PLAN 'B'

PROFESSIONAL SEAL

KEVIN J. BESSOLO
AR12069

© COPYRIGHT BRESSOLO DESIGN GROUP, INC.
THIS DRAWING AND ALL INFORMATION CONTAINED, INCLUDING ALL
RELATED DIGITAL DRAWINGS OR FILES HEREIN ARE THE EXCLUSIVE
PROPERTY OF BRESSOLO DESIGN GROUP, INC. SHALL NOT BE COPIED OR
USED IN ANY WAY WITHOUT THE EXPRESS WRITTEN CONSENT OF
BRESSOLO DESIGN GROUP, INC. AND MUST BE RETURNED UPON REQUEST.
ALL DRAWINGS ARE PRELIMINARY AND NOT FOR CONSTRUCTION
PURPOSES AND ARE DESIGNED FOR PRIORITY REVIEW PURPOSES.

**MHA - PALMS AT UNIVERSITY
APARTMENTS
PHASE I - BUILDING I**

ISSUED

DATE:	ISSUED FOR:
12-29-17	BUILDING PERMIT

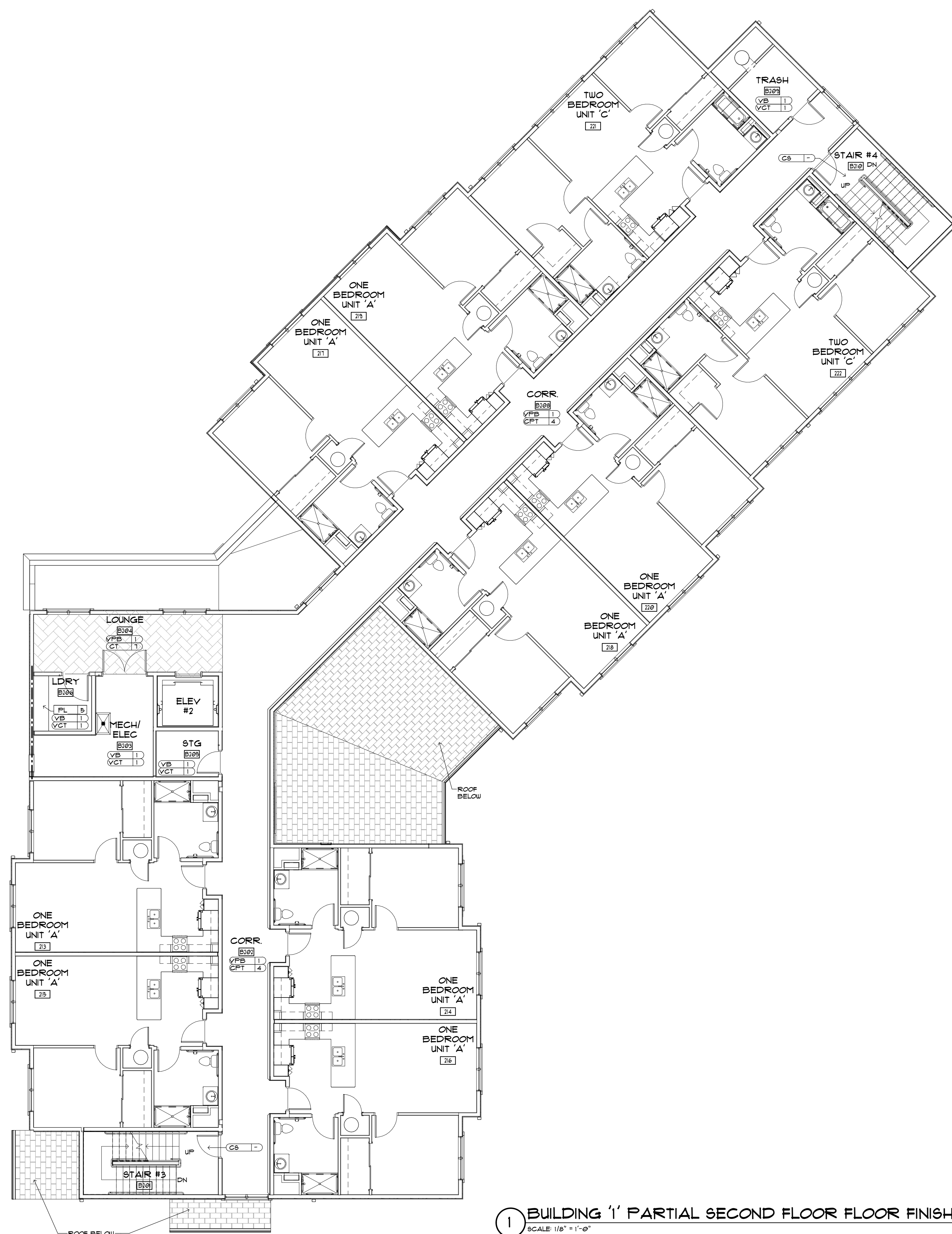
REVISIONS

[illegible]

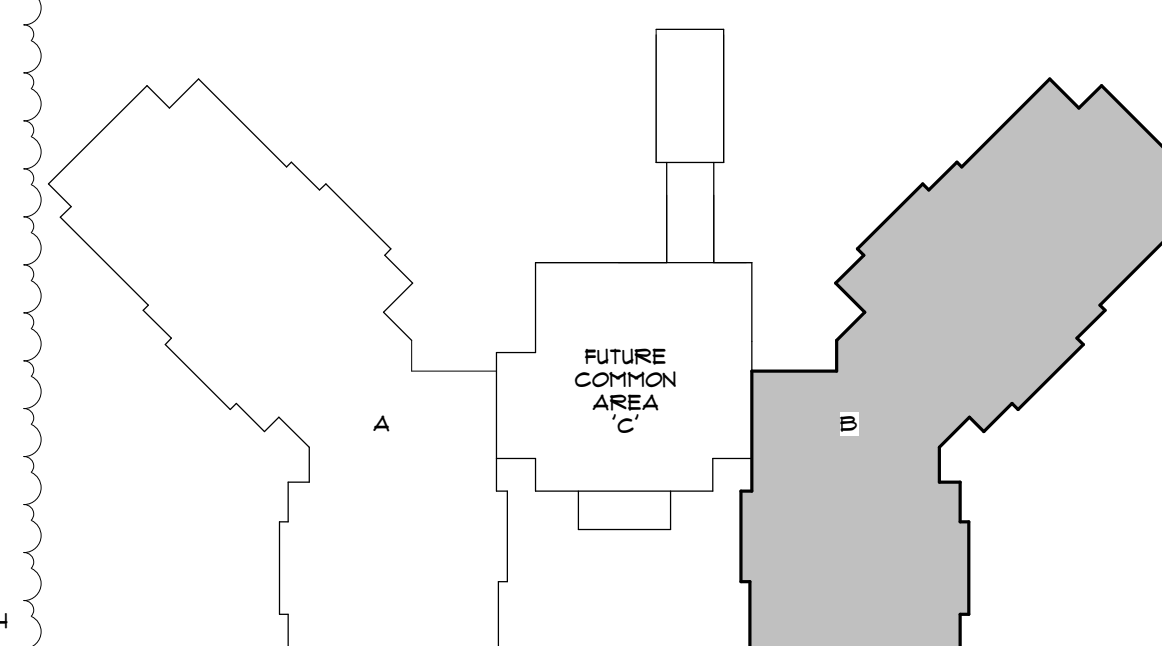
PROJECT NO:	15083.00
DRAWN BY:	SUG
PROJECT MANAGER:	AIW
CHECKED BY:	KJB
DATE:	12-29-17
SCALE:	1/8" = 1'-0"

ID202B

BUILDING 'I'
PARTIAL SECOND FLOOR
FLOOR FINISH PLAN 'B'



KEY PLAN



PROFESSIONAL SEAL

KEVIN J. BESSOLO
AR12069

© COPYRIGHT BESSOLO DESIGN GROUP, INC.
THIS DRAWING AND ALL INFORMATION CONTAINED, INCLUDING ALL
RELATED DIGITAL DRAWINGS OR FILES HEREIN ARE THE EXCLUSIVE
PROPERTY OF BESSOLO DESIGN GROUP, INC. SHALL NOT BE COPIED OR
USED IN ANY WAY WITHOUT THE EXPRESS WRITTEN CONSENT OF
BESSOLO DESIGN GROUP, INC. AND MUST BE RETURNED UPON REQUEST.
ALL DRAWINGS ARE PRELIMINARY AND NOT FOR CONSTRUCTION
PURPOSES UNLESS SIGNED AND SEALED BY KEVIN L. BESSOLO.

**MHA - PALMS AT UNIVERSITY
APARTMENTS
PHASE I - BUILDING I**

ISSUED

DATE:	ISSUED FOR:
12-29-17	BUILDING PERMIT

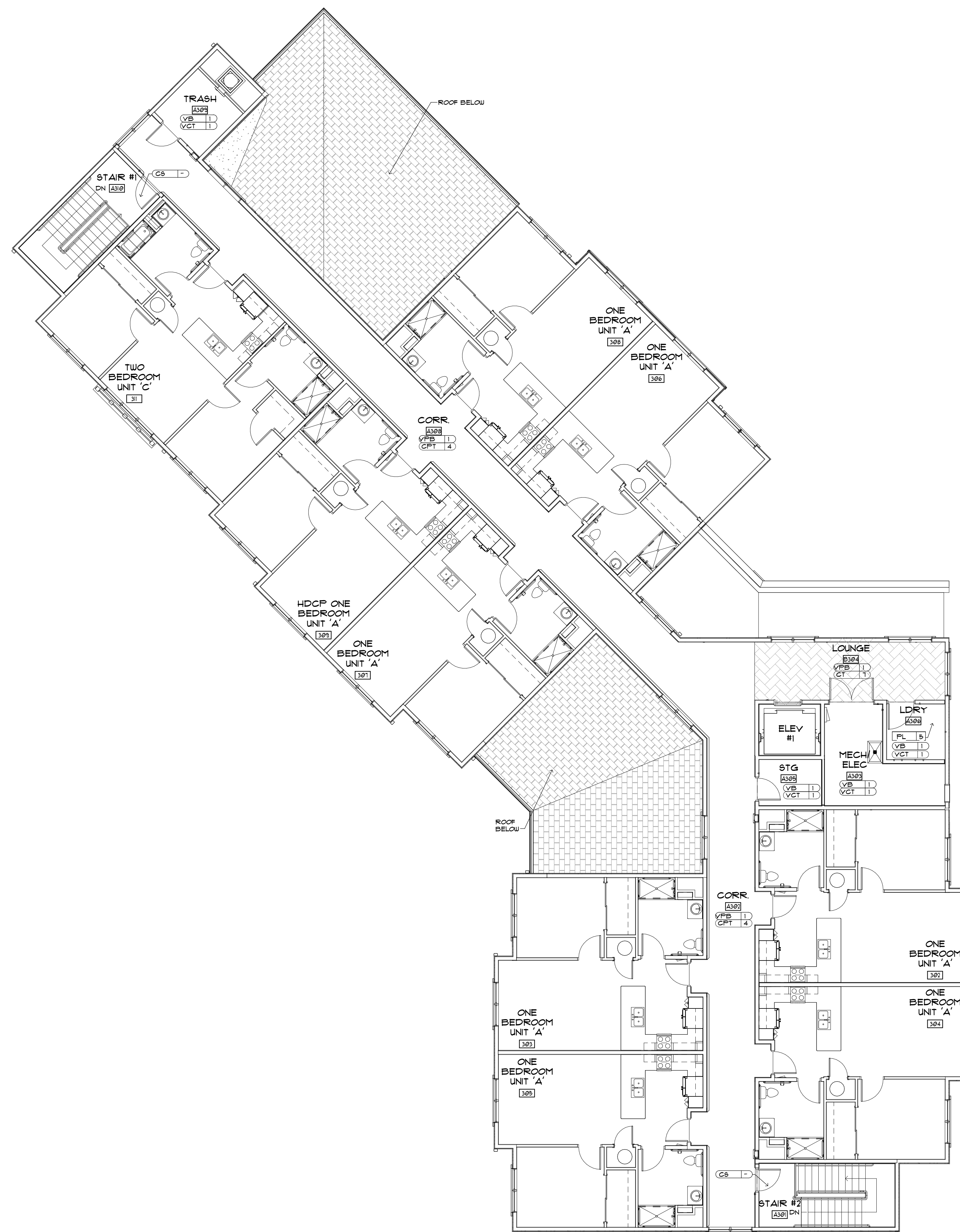
REVISIONS

[illegible]

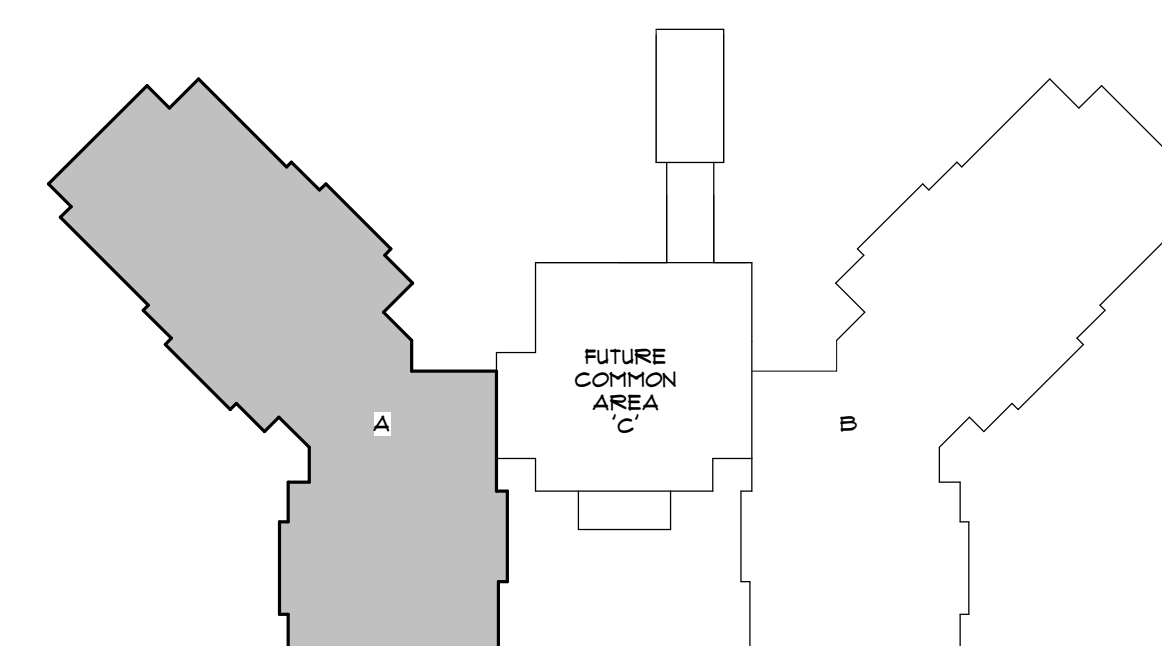
PROJECT NO:	15083.00
DRAWN BY:	SUG
PROJECT MANAGER:	AIW
CHECKED BY:	KJB
DATE:	12-29-17
SCALE:	1/8" = 1'-0"

ID203A

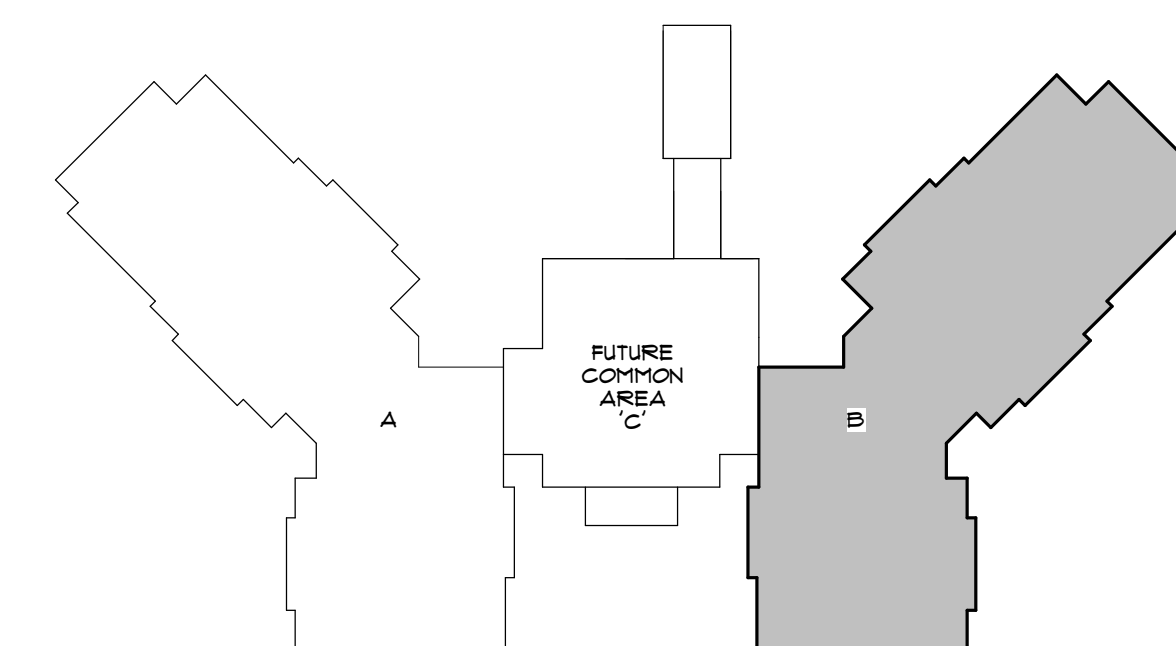
BUILDING '1'
PARTIAL THIRD FLOOR
FLOOR FINISH PLAN 'A'



1 BUILDING '1' PARTIAL THIRD FLOOR FLOOR FINISH PLAN 'A'



KEY PLAN



KEY PLAN



PROFESSIONAL SEAL

KEVIN J. BESSOLO
AR12069

© COPYRIGHT BESSOLO DESIGN GROUP, INC. THIS DRAWING AND ALL INFORMATION CONTAINED, INCLUDING ALL RELATED DIGITAL DRAWINGS OR FILES HEREIN ARE THE EXCLUSIVE PROPERTY OF BESSOLO DESIGN GROUP, INC. SHALL NOT BE COPIED OR USED IN ANY WAY WITHOUT THE EXPRESS WRITTEN CONSENT OF BESSOLO DESIGN GROUP, INC. AND MUST BE RETURNED UPON REQUEST. ALL DRAWINGS ARE PRELIMINARY AND NOT FOR CONSTRUCTION PURPOSES UNLESS SIGNED AND SEALED BY KEVIN J. BESSOLO.

**MHA - PALMS AT UNIVERSITY
APARTMENTS
PHASE I I - BUILDING I**

505 E UNIVERSITY BOULEVARD
MELBOURNE, FLORIDA 32901

ISSUED

DATE:	ISSUED FOR:
12-29-17	BUILDING PERMIT

REVISIONS

[illegible]

PROJECT NO:	15083.00
DRAWN BY:	SUG
PROJECT MANAGER:	AW
CHECKED BY:	KJB
DATE:	12-29-17
SCALE:	1/8" = 1'-0"

ID203B

BUILDING '1'
PARTIAL THIRD FLOOR
FLOOR FINISH PLAN 'B'

PROFESSIONAL SEAL

KEVIN J. BESSOLO
AR12069

© COPYRIGHT BESSOLO DESIGN GROUP, INC.
THIS DRAWING AND ALL INFORMATION CONTAINED, INCLUDING ALL
RELATED DIGITAL DRAWINGS OR FILES HEREIN ARE THE EXCLUSIVE
PROPERTY OF BESSOLO DESIGN GROUP, INC. SHALL NOT BE COPIED OR
USED IN ANY WAY WITHOUT THE EXPRESS WRITTEN CONSENT OF
BESSOLO DESIGN GROUP, INC. AND MUST BE RETURNED UPON REQUEST.
ALL DRAWINGS ARE PRELIMINARY AND NOT FOR CONSTRUCTION
PURPOSES. UNLESS SIGNED AND SEALED BY AN INDIVIDUAL BESSOLO.

**MHA - PALMS AT UNIVERSITY
APARTMENTS
PHASE I - BUILDING I**

ISSUED

DATE:	ISSUED FOR:
12-29-17	BUILDING PERMIT

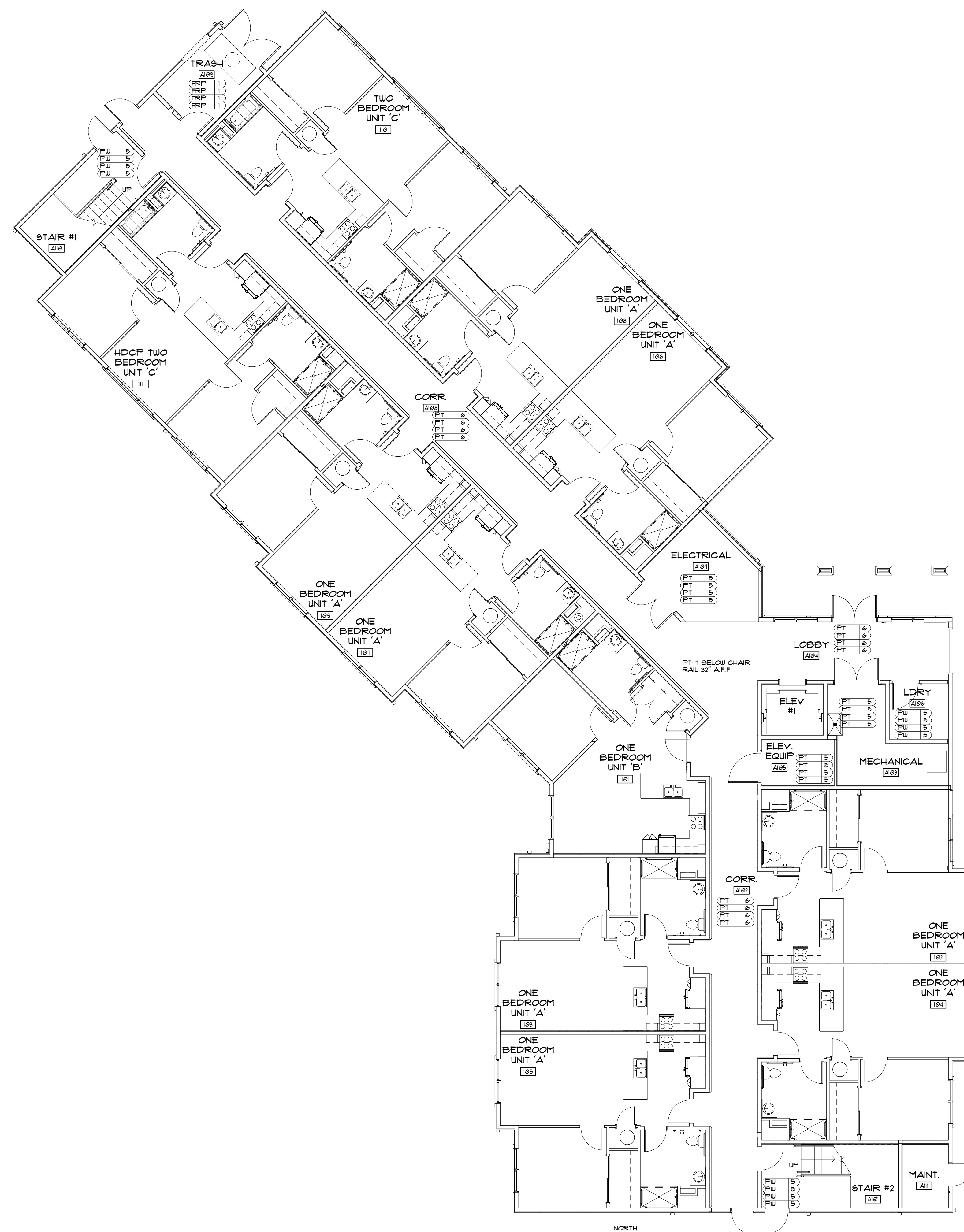
REVISIONS

[illegible]

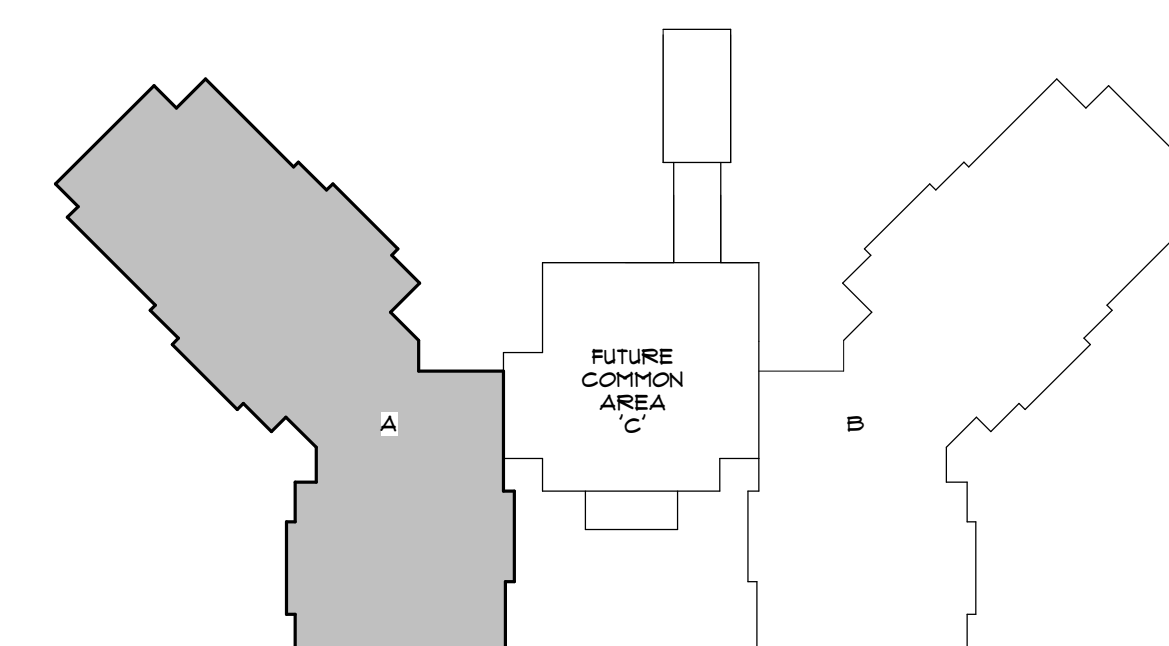
PROJECT NO:	15083.00
DRAWN BY:	SUG
PROJECT MANAGER:	AW
CHECKED BY:	KJB
DATE:	12-29-17
SCALE:	1/8" = 1'-0"

1D301A

BUILDING '1'
PARTIAL FIRST FLOOR
WALL FINISH PLAN 'A'



1 BUILDING '1' PARTIAL FIRST FLOOR WALL FINISH PLAN 'A'
SCALE: 1/8" = 1'-0"



KEY PLAN

PROFESSIONAL SEAL

EVIN J. BESSOLO
AR12069

© COPYRIGHT BESSOLO DESIGN GROUP, INC.
THIS DRAWING AND ALL INFORMATION CONTAINED, INCLUDING ALL
RELATED DIGITAL DRAWINGS OR FILES HEREIN ARE THE EXCLUSIVE
PROPERTY OF BESSOLO DESIGN GROUP, INC. SHALL NOT BE COPIED OR
USED IN ANY WAY WITHOUT THE EXPRESS WRITTEN CONSENT OF
BESSOLO DESIGN GROUP, INC. AND MUST BE RETURNED UPON REQUEST.
ALL DRAWINGS ARE PRELIMINARY AND NOT FOR CONSTRUCTION
PURPOSES UNLESS SIGNED AND SEALED BY KEVIN J. BESSOLO.

MHA - PALMS AT UNIVERSITY
APARTMENTS
PHASE I I - BUILDING I
585 E. UNIVERSITY BOULEVARD
MELBOURNE, FLORIDA 32901

ISSUED

DATE:	ISSUED FOR:
2-29-17	BUILDING PERMIT

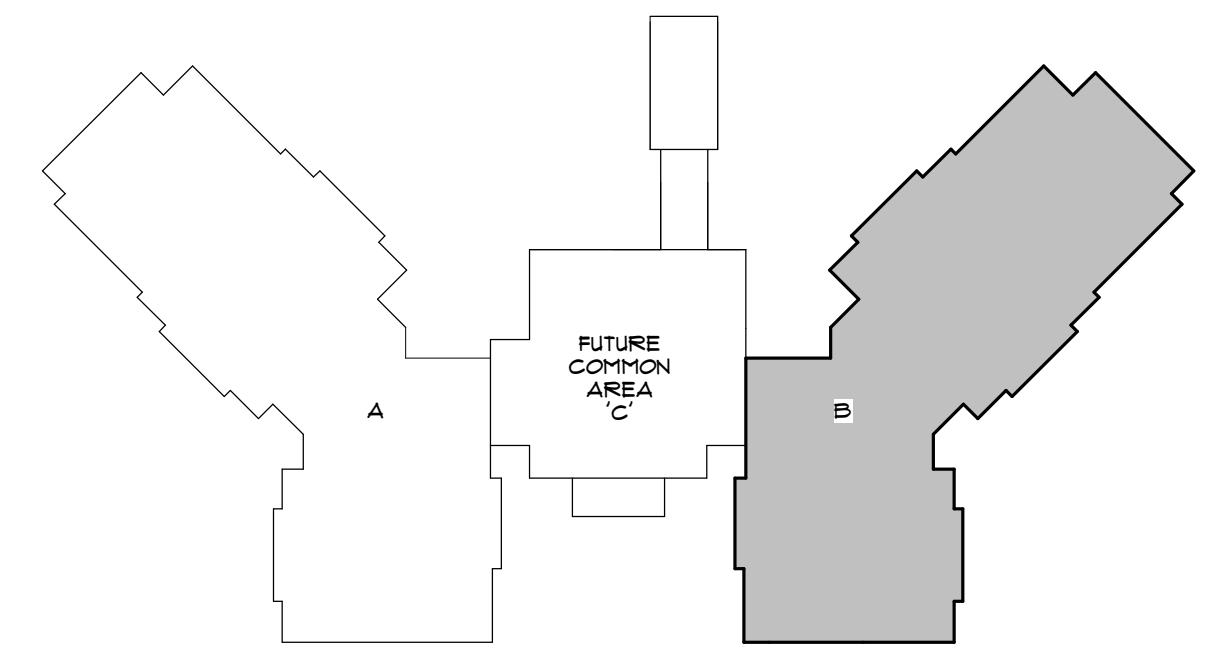
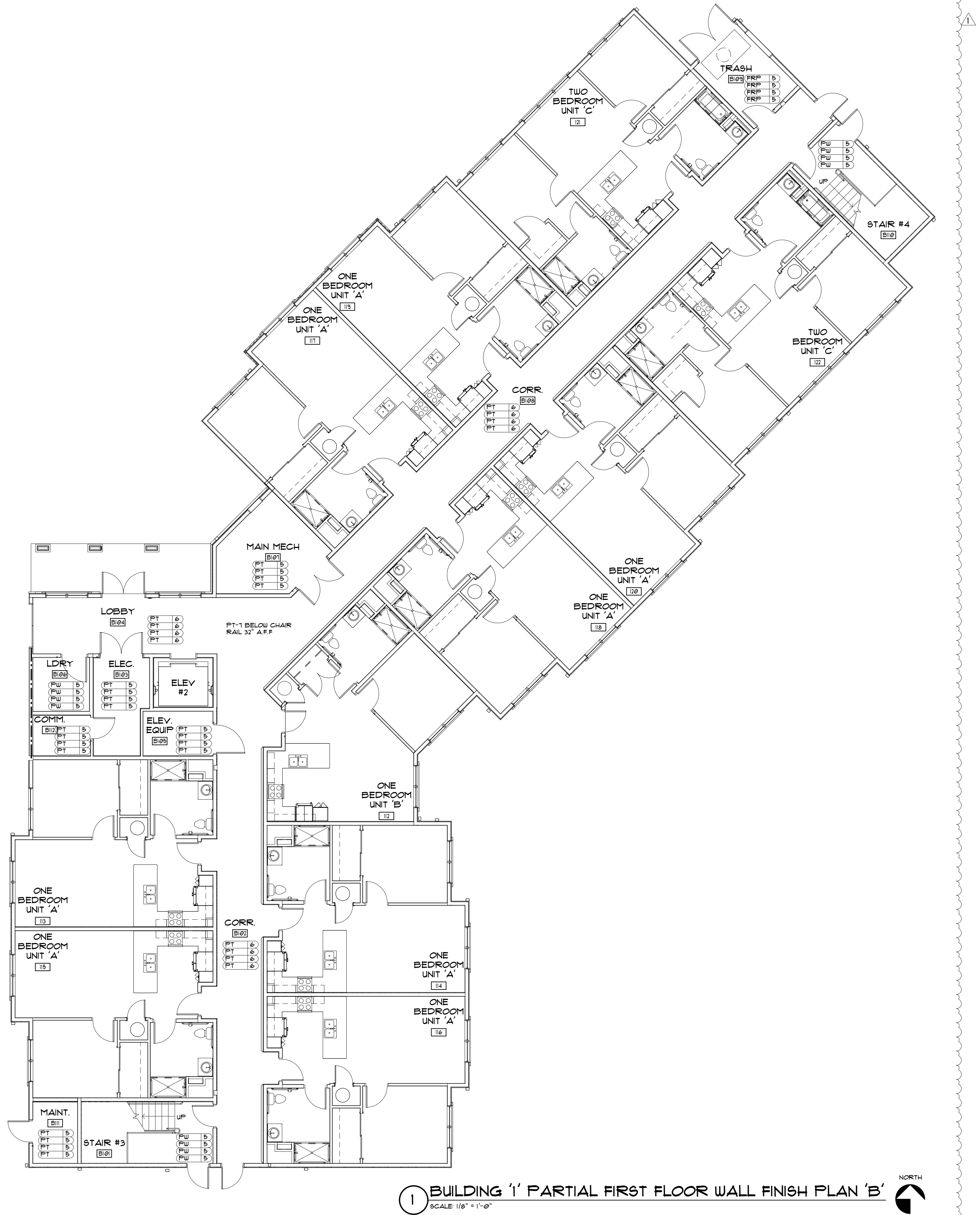
REVISIONS

[illegible]

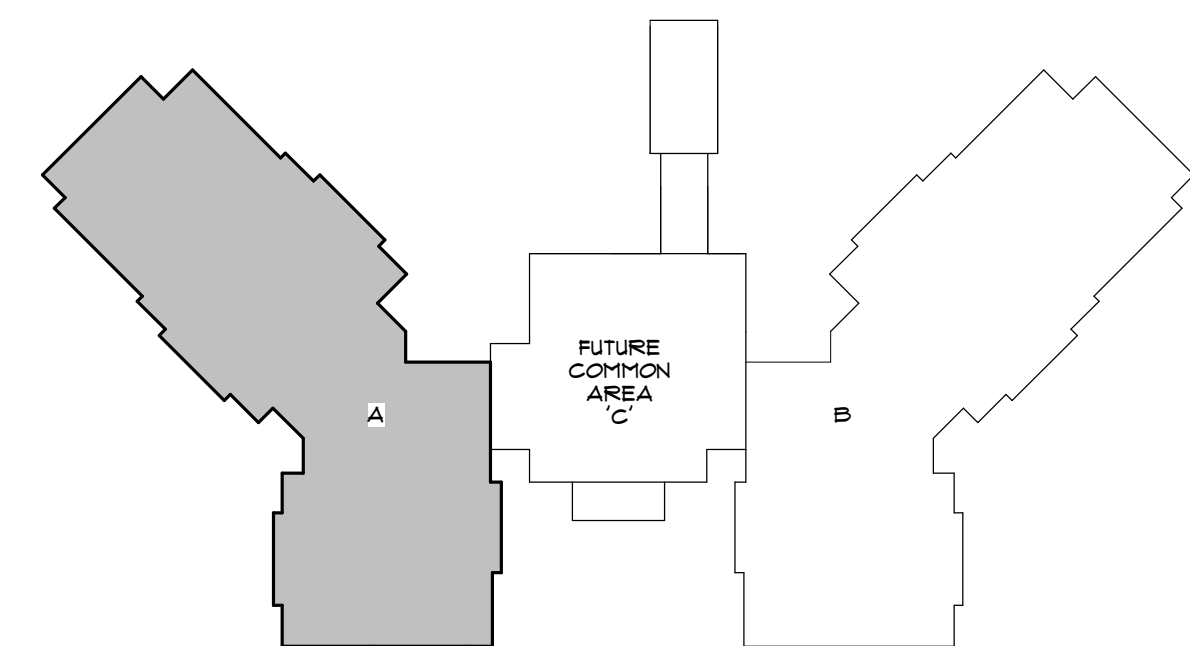
PROJECT NO:	15083.00
DRAWN BY:	SUG
PROJECT MANAGER:	AW
CHECKED BY:	KJB
DATE:	12-29-17
SCALE:	1/8" = 1'-0"

ID301B

BUILDING '1'
PARTIAL FIRST FLOOR
WALL FINISH PLAN 'B'



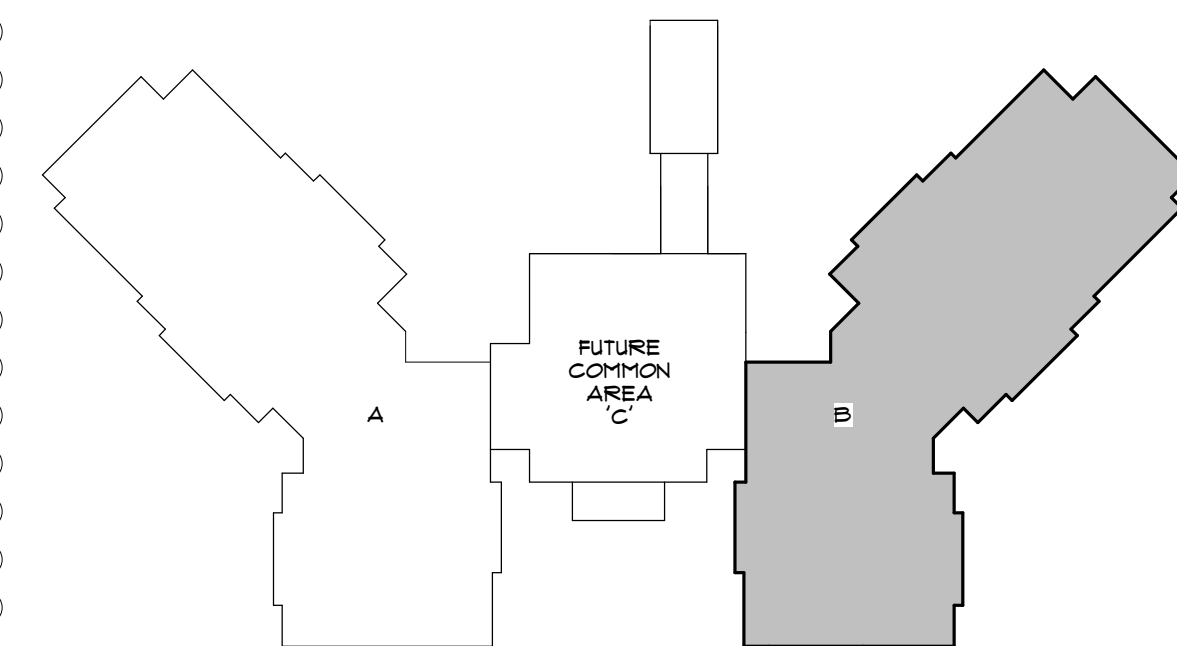
KEY PLAN



ID302A

BUILDING '1'
PARTIAL SECOND FLOOR
WALL FINISH PLAN 'A'

1 BUILDING '1' PARTIAL SECOND FLOOR WALL FINISH PLAN 'B'
SCALE: 1/8" = 1'-0"



KEY PLAN



PROFESSIONAL SEAL

KEVIN J. BESSOLO
AR12069

© COPYRIGHT BESSOLO DESIGN GROUP, INC.
THIS DRAWING AND ALL INFORMATION CONTAINED, INCLUDING ALL
RELATED DIGITAL DRAWINGS OR FILES HEREIN ARE THE EXCLUSIVE
PROPERTY OF BESSOLO DESIGN GROUP, INC. SHALL NOT BE COPIED OR
USED IN ANY WAY WITHOUT THE EXPRESS WRITTEN CONSENT OF
BESSOLO DESIGN GROUP, INC. AND MUST BE RETURNED UPON REQUEST.
ALL DRAWINGS ARE PRELIMINARY AND NOT FOR CONSTRUCTION
PURPOSES UNLESS SIGNED AND SEALED BY KEVIN J. BESSOLO.

**MHA - PALMS AT UNIVERSITY
APARTMENTS
PHASE II - BUILDING I**

585 E. UNIVERSITY BOULEVARD
MELBOURNE, FLORIDA 32901

ISSUED	
DATE:	ISSUED FOR:
12-29-17	BUILDING PERMIT

[illegible]

PROJECT NO:	15083.00
DRAWN BY:	SUG
PROJECT MANAGER:	AW
CHECKED BY:	KJB
DATE:	12-29-17
SCALE:	1/8" = 1'-0"

ID302B

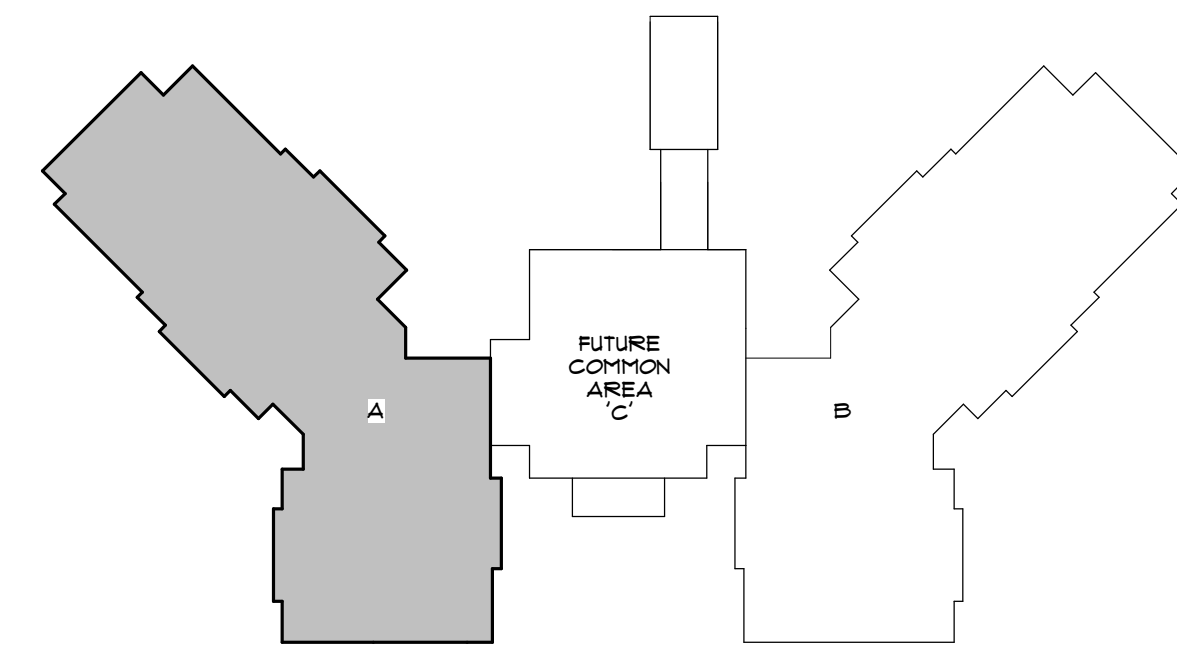
.....

BUILDING '1'
PARTIAL SECOND FLOOR
WALL FINISH PLAN 'B'

ISSUED	
DATE:	ISSUED FOR:
12-29-17	BUILDING PERMIT

PROJECT NO:	15083.00
DRAWN BY:	9UC
PROJECT MANAGER:	AL
CHECKED BY:	KJE
DATE:	12-29-11
SCALE:	1/8" = 1'-0"

ID303A
 BUILDING 'I'
 PARTIAL THIRD FLOOR
 WALL FINISH PLAN 'A'



KEY PLAN

PROFESSIONAL SEAL

KEVIN J. BESSOLO
AR12069

© COPYRIGHT BRESSOLO DESIGN GROUP, INC.
THIS DRAWING AND ALL INFORMATION CONTAINED, INCLUDING ALL
RELATED DIGITAL DRAWINGS OR FILES HEREIN ARE THE EXCLUSIVE
PROPERTY OF BRESSOLO DESIGN GROUP, INC. SHALL NOT BE COPIED OR
USED IN ANY WAY WITHOUT THE EXPRESS WRITTEN CONSENT OF
BRESSOLO DESIGN GROUP, INC. AND MUST BE RETURNED UPON REQUEST.
ALL DRAWINGS ARE PRELIMINARY AND NOT FOR CONSTRUCTION
PURPOSES AND ARE DESIGNED FOR PRIORITY REVIEW PURPOSES.

**MHA - PALMS AT UNIVERSITY
APARTMENTS
PHASE I - BUILDING I**

ISSUED

DATE:	ISSUED FOR:
12-29-17	BUILDING PERMIT

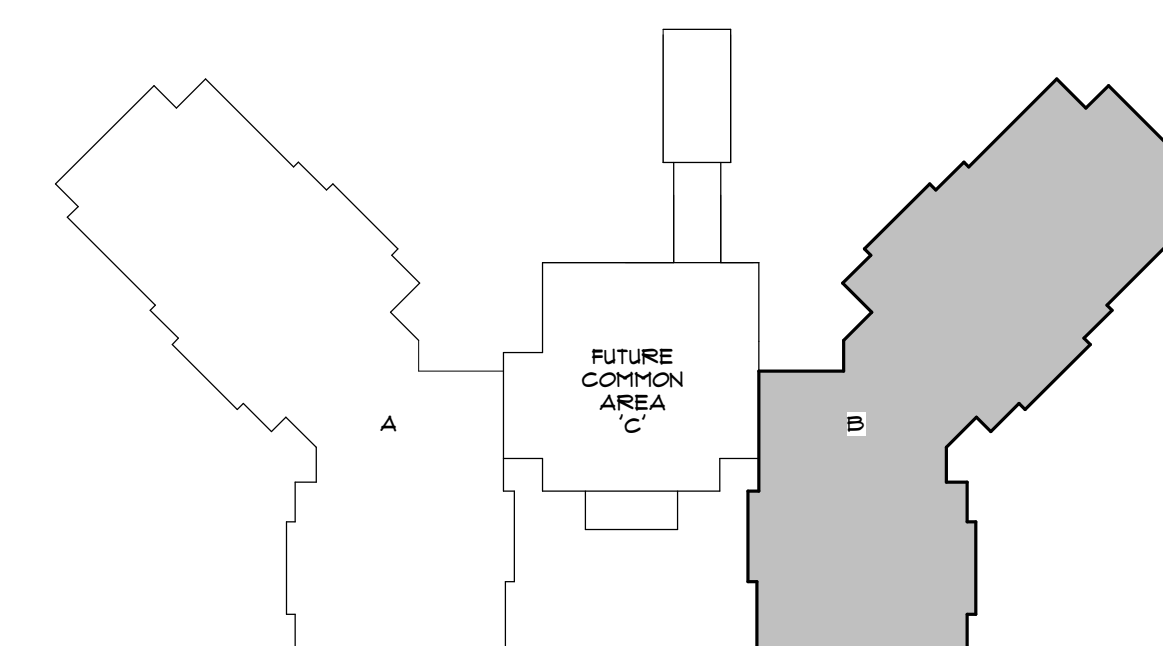
REVISIONS

[illegible]

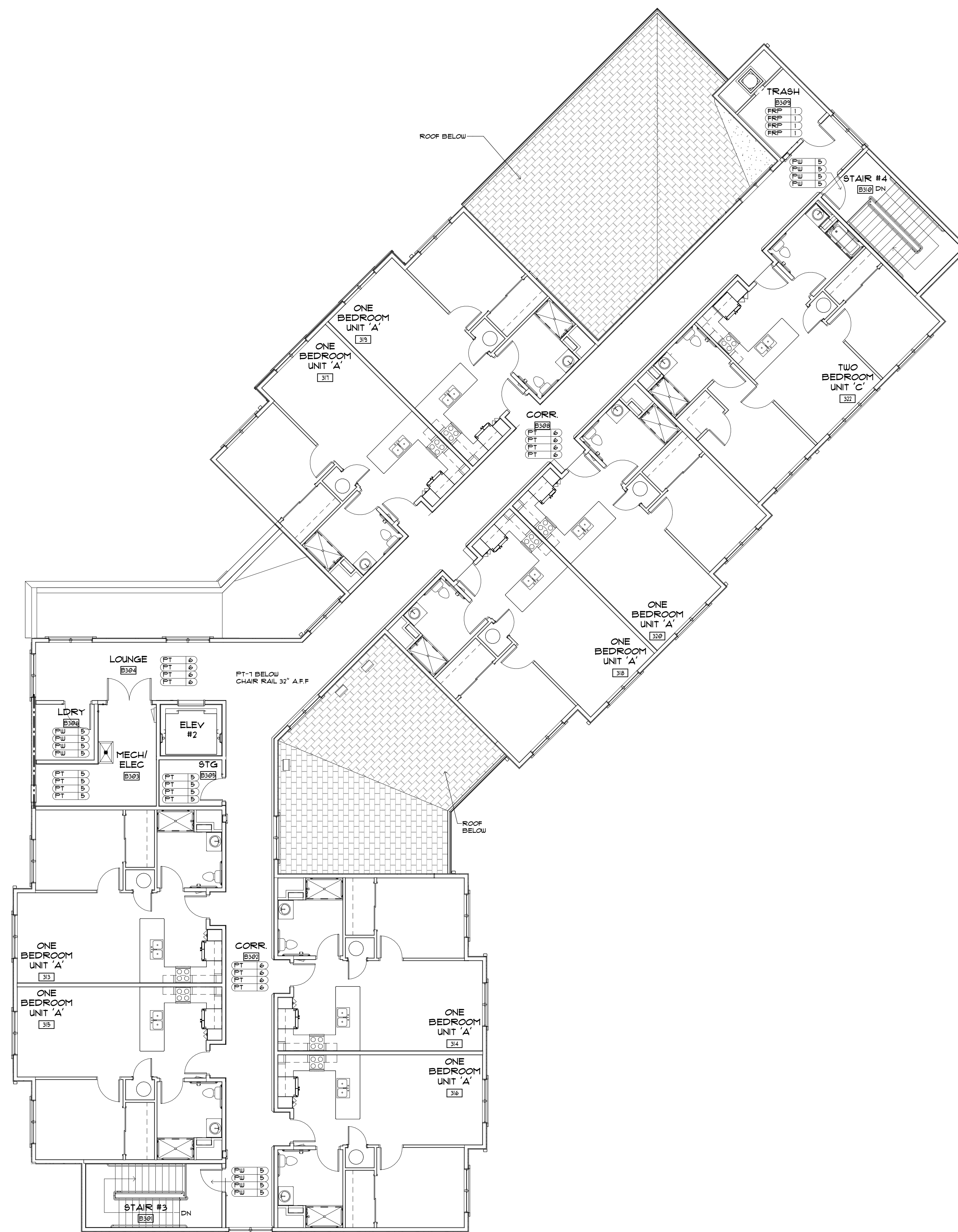
PROJECT NO:	15083.00
DRAWN BY:	SUG
PROJECT MANAGER:	AIW
CHECKED BY:	KJB
DATE:	12-29-17
SCALE:	1/8" = 1'-0"

ID303B

BUILDING '1'
PARTIAL THIRD FLOOR
WALL FINISH PLAN 'B'



KEY PLAN



1 BUILDING 'I' PARTIAL THIRD FLOOR WALL FINISH PLAN 'B'





© COPYRIGHT BESSOLO DESIGN GROUP, INC.
THIS DRAWING AND ALL INFORMATION CONTAINED, INCLUDING ALL
RELATED DIGITAL DRAWINGS OR FILES HEREIN ARE THE EXCLUSIVE
PROPERTY OF BESSOLO DESIGN GROUP, INC. SHALL NOT BE COPIED OR
USED IN ANY WAY WITHOUT THE EXPRESS WRITTEN CONSENT OF
BESSOLO DESIGN GROUP, INC. AND MUST BE RETURNED UPON REQUEST.
ALL DRAWINGS ARE PRELIMINARY AND NOT FOR CONSTRUCTION
PURPOSES UNLESS SIGNED AND SEALED BY KEVIN J. BESSOLO.

**MHA - PALMS AT UNIVERSITY
APARTMENTS
PHASE II - BUILDING I**

ISSUED	
DATE:	ISSUED FOR:
12-29-11	BUILDING PERMIT

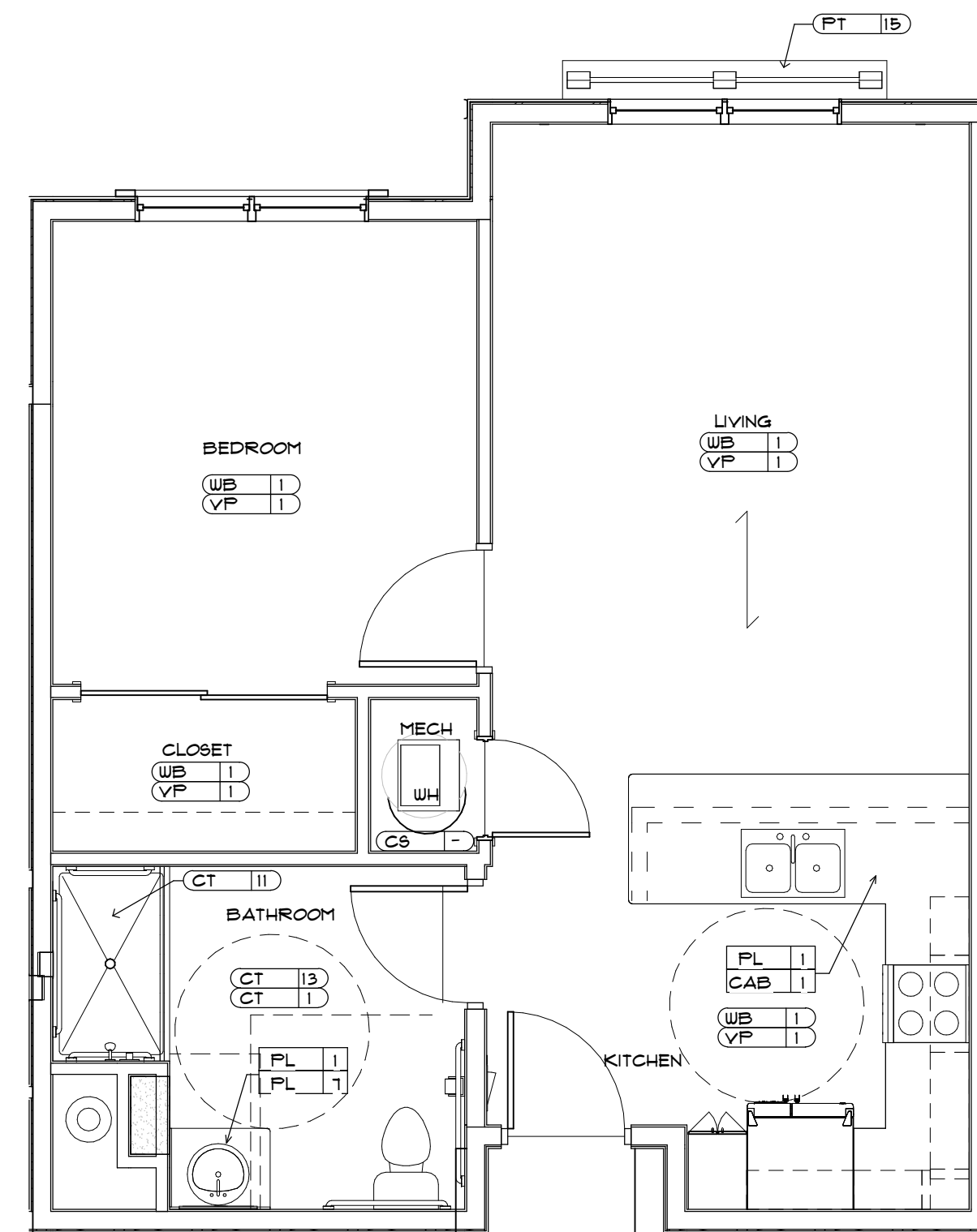
[illegible]

PROJECT NO:	15083.00
DRAWN BY:	SUG
PROJECT MANAGER:	AW
CHECKED BY:	KJB
DATE:	12-29-11
SCALE:	1/4" = 1'-0"

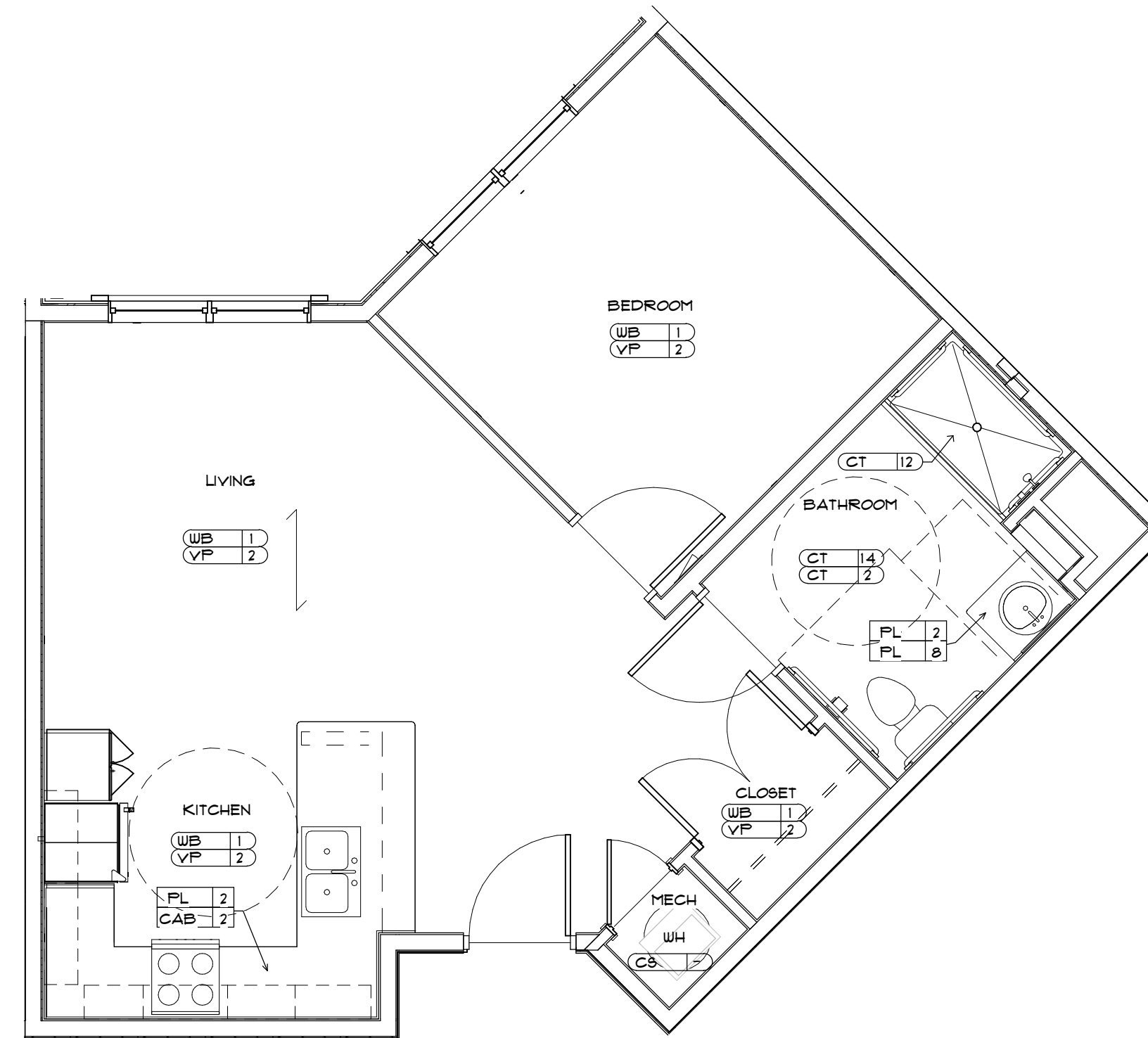
ID401

.....

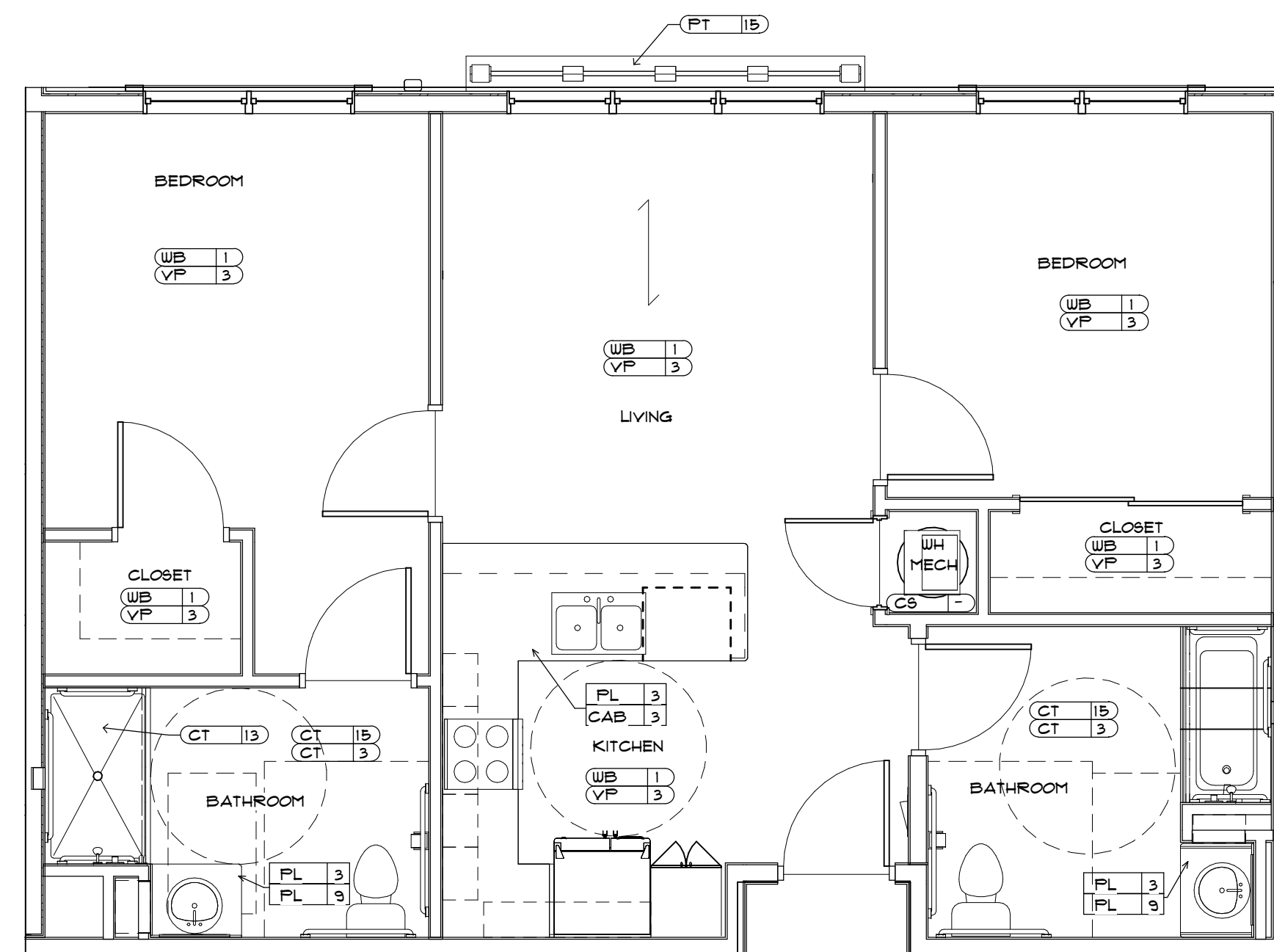
BUILDING '1'
UNIT FURNITURE PLANS



1 ONE BEDROOM - UNIT 'A'
SCALE: 1/4" = 1'-0"



2 ONE BEDROOM - UNIT 'B'



3 TWO BEDROOM - UNIT 'C'
SCALE: 1/4" = 1'-0"



PROFESSIONAL SEAL

EVIN J. BESSOLO
AR12069

© COPYRIGHT BESOLO DESIGN GROUP, INC.
THIS DRAWING AND ALL INFORMATION CONTAINED, INCLUDING ALL
RELATED DIGITAL DRAWINGS OR FILES HEREIN ARE THE EXCLUSIVE
PROPERTY OF BESOLO DESIGN GROUP, INC. SHALL NOT BE COPIED OR
USED IN ANY WAY WITHOUT THE EXPRESS WRITTEN CONSENT OF
BESOLO DESIGN GROUP, INC. AND MUST BE RETURNED UPON REQUEST.
ALL DRAWINGS ARE PRELIMINARY AND NOT FOR CONSTRUCTION
PURPOSES UNLESS SIGNED AND SEALED BY KEVIN J. BESOLO.

**MHA - PALMS AT UNIVERSITY
APARTMENTS
PHASE II - BUILDING I**

**585 E. UNIVERSITY BOULEVARD
MELBOURNE, FLORIDA 32901**

ISSUED	
DATE:	ISSUED FOR:
12-29-17	BUILDING PERMIT

[illegible]

PROJECT NO:	15083.00
DRAWN BY:	SUG
PROJECT MANAGER:	AW
CHECKED BY:	KJB
DATE:	12-29-17
SCALE:	1/4" = 1'-0"

ID402

BUILDING '1'

UNIT FLOOR FINISH PLANS



ROOM FINISH SCHEDULE - RESIDENT UNITS												
ROOM #	ROOM NAME	FLOORING	# BASE	# TRIM	# WALL MATERIAL	N	# E	# S	# W	#	NOTES	
A-1	KITCHEN	VP	1 WB	1 PT	1 PT	2 PT	2 PT	2 PT	2 PT	2		
A-2	BATHROOM	CT	1 CT	13 PT	1 PW	2 PW	2 PW	2 PW	2 PW	2		
A-3	LIVING	VP	1 WB	1 PT	1 PT	2 PT	2 PT	2 PT	2 PT	2		
A-4	BEDROOM	VP	1 WB	1 PT	1 PT	2 PT	2 PT	2 PT	2 PT	2		
B-1	KITCHEN	VP	2 WB	1 PT	1 PT	3 PT	3 PT	3 PT	3 PT	3		
B-2	BATHROOM	CT	2 CT	14 PT	1 PW	3 PW	3 PW	3 PW	3 PW	3		
B-3	LIVING	VP	2 WB	1 PT	1 PT	3 PT	3 PT	3 PT	3 PT	3		
B-4	BEDROOM	VP	2 WB	1 PT	1 PT	3 PT	3 PT	3 PT	3 PT	3		
C-1	KITCHEN	VP	3 WB	1 PT	1 PT	4 PT	4 PT	4 PT	4 PT	4		
C-2	BATHROOM	CT	3 CT	15 PT	1 PW	4 PW	4 PW	4 PW	4 PW	4		
C-3	LIVING	VP	3 WB	1 PT	1 PT	4 PT	4 PT	4 PT	4 PT	4		
C-4	BEDROOM	VP	3 WB	1 PT	1 PT	4 PT	4 PT	4 PT	4 PT	4		



BESSOLO

DESIGN GROUP, INC.

ARCHITECTURE ■ DEVELOPMENT

License #A-C002117

7901 4TH ST. NORTH, SUITE 200 ■
ST. PETERSBURG, FL 33702

727 894-4453 ■ www.bessolo.com

727 894-7777 ■ www.welcomes.com

PROFESSIONAL SEAL

KEVIN J. BESSOLO
AR12069

© COPYRIGHT BESSOLO DESIGN GROUP, INC.
THIS DRAWING AND ALL INFORMATION CONTAINED, INCLUDING ALL
RELATED DIGITAL DRAWINGS OR FILES HEREIN ARE THE EXCLUSIVE
PROPERTY OF BESSOLO DESIGN GROUP, INC. SHALL NOT BE COPIED OR
USED IN ANY WAY WITHOUT THE EXPRESS WRITTEN CONSENT OF
BESSOLO DESIGN GROUP, INC. AND MUST BE RETURNED UPON REQUEST.
ALL DRAWINGS ARE PRELIMINARY AND NOT FOR CONSTRUCTION
PURPOSES UNLESS SIGNED AND SEALED BY KEVIN J. BESSOLO.

MHA - PALMS AT UNIVERSITY
APARTMENTS
PHASE I I - BUILDING I
585 E. UNIVERSITY BOULEVARD
MELBOURNE, FLORIDA 32901

ISSUED

DATE:	ISSUED FOR:
12-29-17	BUILDING PERMIT

REVISIONS

[illegible]

PROJECT NO:	15083.00
DRAWN BY:	SUG
PROJECT MANAGER:	AW
CHECKED BY:	KJB
DATE:	12-29-11
SCALE:	NOT TO SCALE

1D601

BUILDING '1' ROOM FINISH SCHEDULE

